

## Product datasheet for **TA384301**

### PSF1 (GINS1) Rabbit Monoclonal Antibody [Clone ID: R04-1A8]

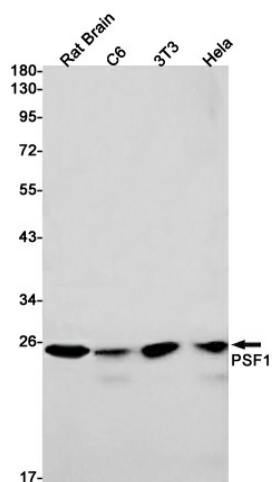
#### Product data:

Product Type:	Primary Antibodies
Clone Name:	R04-1A8
Applications:	IF, IP, WB
Recommended Dilution:	WB: 1/2000-1/10000 ICC/IF: 1/50 IP: 1/20
Reactivity:	Human, Mouse, Rat
Host:	Rabbit
Isotype:	IgG
Clonality:	Monoclonal
Immunogen:	A synthetic peptide of human PSF1
Formulation:	50mM Tris-Glycine(pH 7.4), 0.15M NaCl, 40% Glycerol, 0.01% Sodium azide and 0.05% BSA
Concentration:	lot specific
Purification:	Affinity Purified
Conjugation:	Unconjugated
Storage:	Store at 4°C short term. Aliquot and store at -20°C long term. Avoid freeze/thaw cycles.
Stability:	1 year
Predicted Protein Size:	Calculated MW: 23 kDa; Observed MW: 23 kDa
Gene Name:	GINS complex subunit 1
Database Link:	<a href="#">Entrez Gene 9837 Human Q14691</a>
Background:	Swiss-Prot Acc.Q14691.The GINS complex plays an essential role in the initiation of DNA replication, and progression of DNA replication forks. GINS complex seems to bind preferentially to single-stranded DNA. GINS1 is essential for function.
Synonyms:	KIAA0186; PSF1

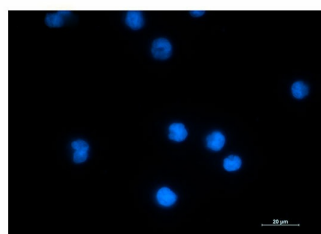
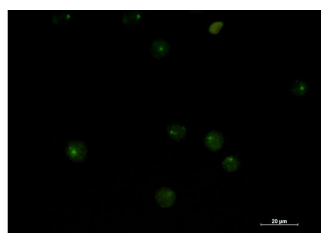


[View online »](#)

## Product images:



Western blot analysis of PSF1 in rat Brain, C6, 3T3, HeLa lysates using PSF1 antibody.



Immunocytochemistry analysis of PSF1 (green) in Jurkat using PSF1 antibody, and DAPI (blue).