

Product datasheet for **TA384298**

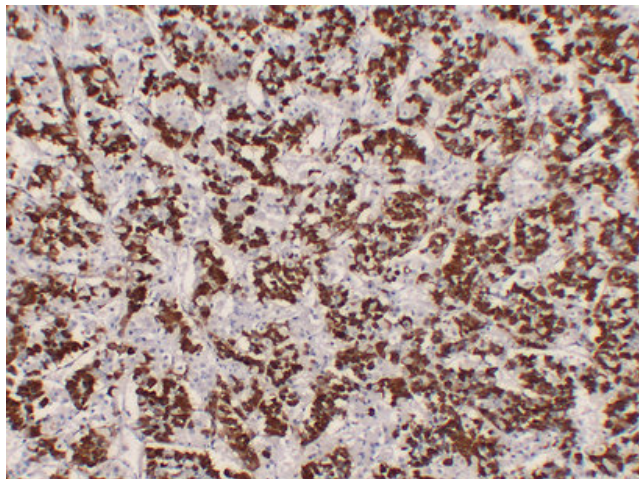
GH2 Mouse Monoclonal Antibody [Clone ID: 2H8-9E10-7F1]

Product data:

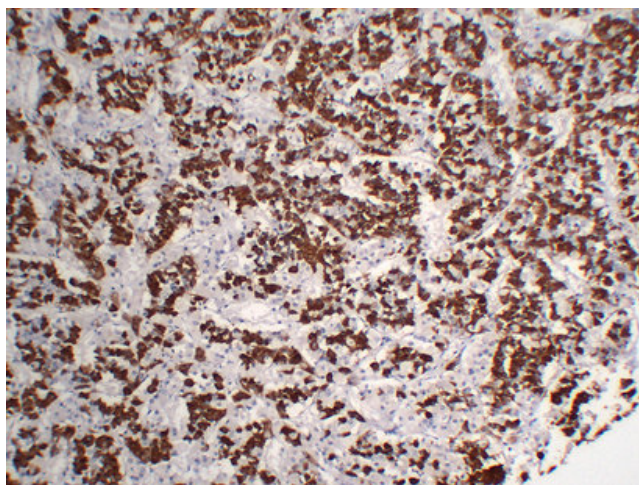
Product Type:	Primary Antibodies
Clone Name:	2H8-9E10-7F1
Applications:	IHC
Recommended Dilution:	IHC-p: 1/100-1/500
Reactivity:	Human
Host:	Mouse
Isotype:	IgG1, kappa
Clonality:	Monoclonal
Immunogen:	Synthesized peptide derived from human Growth Hormone(GH)
Formulation:	Liquid in PBS containing 50% glycerol, 0.5% BSA and 0.02% sodium azide, pH 7.3.
Concentration:	lot specific
Purification:	Affinity Chromatography
Conjugation:	Unconjugated
Storage:	Store at 4°C short term. Aliquot and store at -20°C long term. Avoid freeze/thaw cycles.
Stability:	1 year
Gene Name:	growth hormone 2
Database Link:	Entrez Gene 2689 Human P01241
Synonyms:	GH-V; GHL; GHV; hGH-V



[View online »](#)

Product images:

Immunohistochemical analysis of paraffin-embedded Pituitary. 1, Antibody was diluted at 1:200(4°,overnight). 2, TRIS-EDTA of pH8.0 was used for antigen retrieval. 3,Secondary antibody was diluted at 1:200(room temperature, 30min).



Immunohistochemical analysis of paraffin-embedded Pituitary. 1, Antibody was diluted at 1:200(4°,overnight). 2, TRIS-EDTA of pH8.0 was used for antigen retrieval. 3,Secondary antibody was diluted at 1:200(room temperature, 30min).