

Product datasheet for **TA384297**

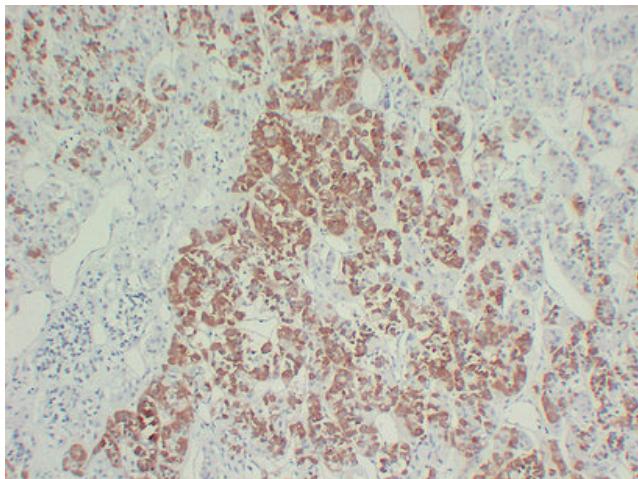
Growth Hormone (GH1) Mouse Monoclonal Antibody [Clone ID: 1H8-4F4-7B6]

Product data:

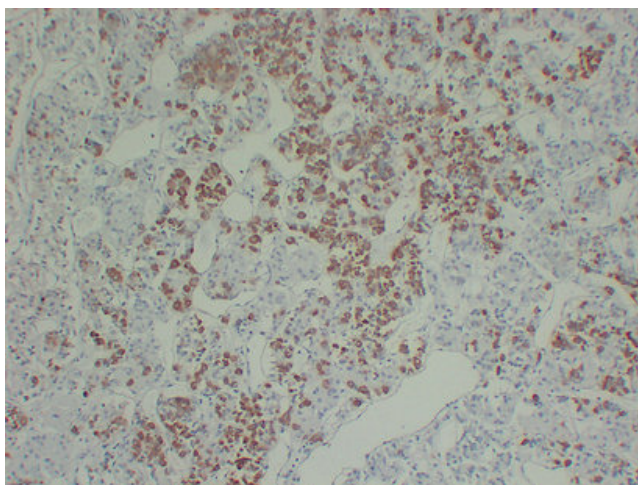
Product Type:	Primary Antibodies
Clone Name:	1H8-4F4-7B6
Applications:	IHC
Recommended Dilution:	IHC-p: 1/100-1/500
Reactivity:	Human
Host:	Mouse
Isotype:	IgG
Clonality:	Monoclonal
Immunogen:	Synthesized peptide derived from human Growth Hormone(GH)
Formulation:	Liquid in PBS containing 50% glycerol, 0.5% BSA and 0.02% sodium azide, pH 7.3.
Concentration:	lot specific
Purification:	Affinity Chromatography
Conjugation:	Unconjugated
Storage:	Store at 4°C short term. Aliquot and store at -20°C long term. Avoid freeze/thaw cycles.
Stability:	1 year
Gene Name:	growth hormone 1
Database Link:	Entrez Gene 2688 Human P01241
Background:	Swiss-Prot Acc.P01241.
Synonyms:	GH; GH-N; GHN; hGH-N; IGHD1B



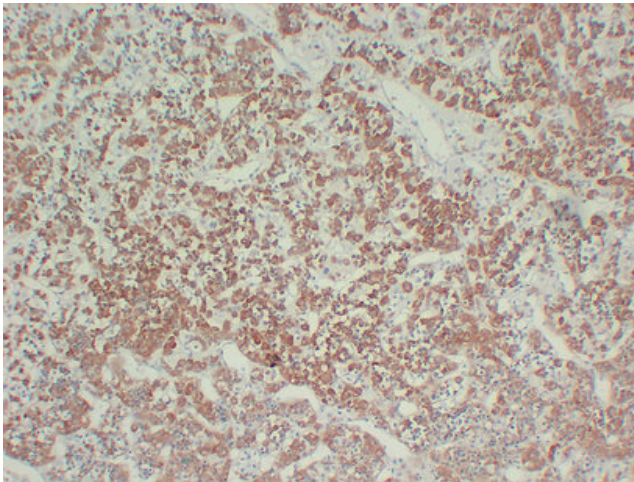
[View online »](#)

Product images:

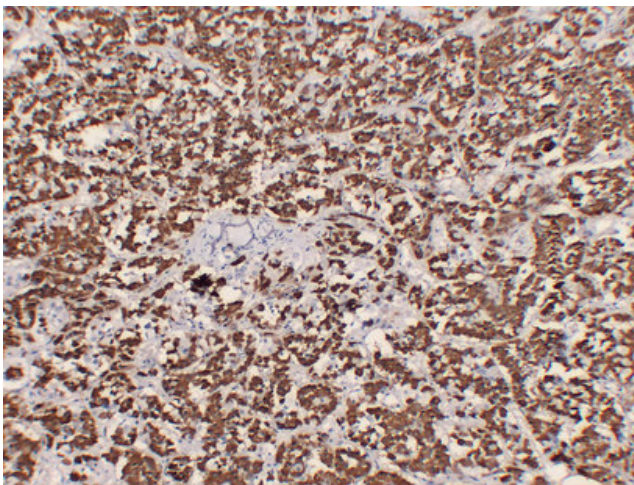
Immunohistochemical analysis of paraffin-embedded Hyperprolactinemia. 1, Antibody was diluted at 1:200(4°,overnight). 2, Tris-EDTA,pH8.0 was used for antigen retrieval. 3,Secondary antibody was diluted at 1:200(room temperature, 30min).



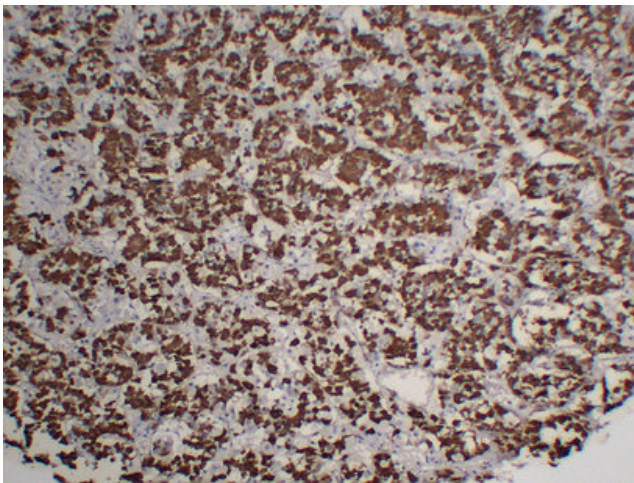
Immunohistochemical analysis of paraffin-embedded Hyperprolactinemia. 1, Antibody was diluted at 1:200(4°,overnight). 2, Tris-EDTA,pH8.0 was used for antigen retrieval. 3,Secondary antibody was diluted at 1:200(room temperature, 30min).



Immunohistochemical analysis of paraffin-embedded Hyperprolactinemia. 1, Antibody was diluted at 1:200(4°,overnight). 2, Tris-EDTA,pH8. was used for antigen retrieval. 3,Secondary antibody was diluted at 1:200(room temperature, 30min).



Immunohistochemical analysis of paraffin-embedded Pituitary. 1, Antibody was diluted at 1:200(4°,overnight). 2, Tris-EDTA,pH8.0 was used for antigen retrieval. 3,Secondary antibody was diluted at 1:200(room temperature, 30min).



Immunohistochemical analysis of paraffin-embedded Pituitary. 1, Antibody was diluted at 1:200(4°,overnight). 2, Tris-EDTA,pH8.0 was used for antigen retrieval. 3,Secondary antibody was diluted at 1:200(room temperature, 30min).