

Product datasheet for **TA384296**

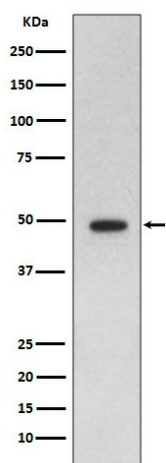
GFAP Rabbit Polyclonal Antibody

Product data:

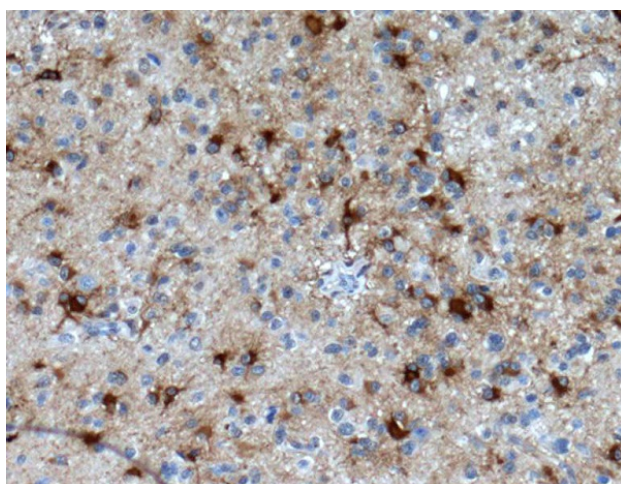
Product Type:	Primary Antibodies
Applications:	IF, IHC, IP, WB
Recommended Dilution:	WB: 1/10000-1/50000 IHC: 1/50-1/200 ICC/IF: 1/50-1/200 IP: 1/30
Reactivity:	Human, Mouse, Rat
Host:	Rabbit
Isotype:	IgG
Clonality:	Polyclonal
Immunogen:	A synthesized peptide derived from human GFAP
Formulation:	Rabbit IgG in phosphate buffered saline , pH 7.4, 150mM NaCl, 0.02% sodium azide and 50% glycerol.
Concentration:	lot specific
Purification:	Affinity Chromatography
Conjugation:	Unconjugated
Storage:	Store at 4°C short term. Aliquot and store at -20°C long term. Avoid freeze/thaw cycles.
Stability:	1 year
Predicted Protein Size:	50kDa
Gene Name:	glial fibrillary acidic protein
Database Link:	Entrez Gene 2670 Human P14136
Background:	Swiss-Prot Acc.P14136.GFAP is commonly used as a marker for intracranial and intraspinal tumors arising from astrocytes. In addition, GFAP intermediate filaments are also present in nonmyelin-forming Schwann cells in the peripheral nervous system
Synonyms:	FLJ45472



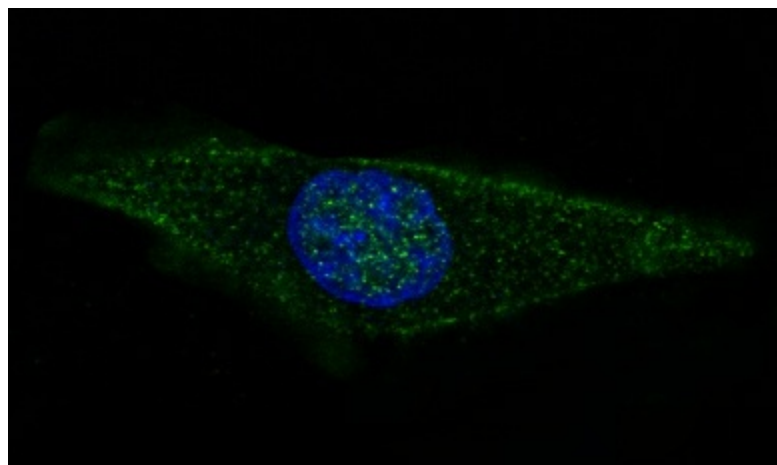
[View online »](#)

Product images:


Western blot analysis of GFAP in rat brain lysates using GFAP antibody.



Immunohistochemistry analysis of paraffin-embedded Human glioma using GFAP antibody. High-pressure and temperature Sodium Citrate pH 6.0 was used for antigen retrieval.



Immunofluorescence analysis of GFAP in SH-SY5Y using GFAP antibody.