

Product datasheet for **TA384294**

GDF6 Rabbit Polyclonal Antibody

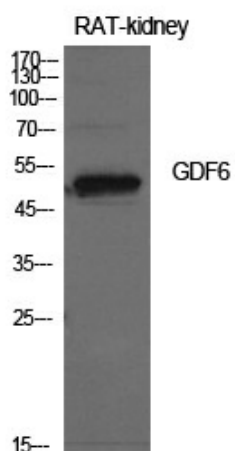
Product data:

Product Type:	Primary Antibodies
Applications:	ELISA, WB
Recommended Dilution:	WB: 1/500-1/2000 ELISA: 1/10000
Reactivity:	Human, Mouse, Rat
Host:	Rabbit
Isotype:	IgG
Clonality:	Polyclonal
Immunogen:	The antiserum was produced against synthesized peptide derived from the Internal region of human GDF6. AA range:311-360
Formulation:	Liquid in PBS containing 50% glycerol, 0.5% BSA and 0.02% sodium azide, pH 7.3.
Concentration:	lot specific
Purification:	Affinity Purified
Conjugation:	Unconjugated
Storage:	Store at 4°C short term. Aliquot and store at -20°C long term. Avoid freeze/thaw cycles.
Stability:	1 year
Predicted Protein Size:	Observed MW (kDa):50
Database Link:	Q6KF10
Background:	Swiss-Prot Acc.Q6KF10.

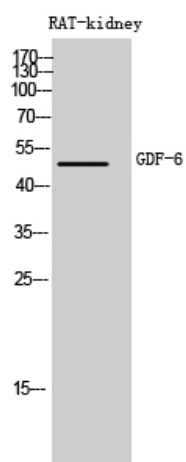


[View online »](#)

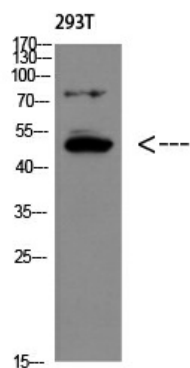
Product images:



Western blot analysis of GDF6 in rat kidney lysates using GDF6 antibody.



Western blot analysis of GDF6 in rat kidney lysates using GDF6 antibody.



Western blot analysis of GDF6 in 293T lysates using GDF6 antibody.