

## Product datasheet for **TA384293**

### GDF15 Rabbit Monoclonal Antibody [Clone ID: R04-811]

#### Product data:

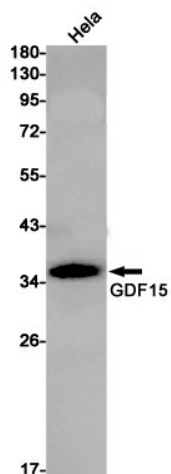
Product Type:	Primary Antibodies
Clone Name:	R04-811
Applications:	WB
Recommended Dilution:	WB: 1/1000
Reactivity:	Human
Host:	Rabbit
Isotype:	IgG
Clonality:	Monoclonal
Immunogen:	A synthetic peptide of human GDF15
Formulation:	50mM Tris-Glycine(pH 7.4), 0.15M NaCl, 40% Glycerol, 0.01% Sodium azide and 0.05% BSA
Concentration:	lot specific
Purification:	Affinity Purified
Conjugation:	Unconjugated
Storage:	Store at 4°C short term. Aliquot and store at -20°C long term. Avoid freeze/thaw cycles.
Stability:	1 year
Predicted Protein Size:	Calculated MW: 34 kDa; Observed MW: 34 kDa
Gene Name:	growth differentiation factor 15
Database Link:	<a href="#">Entrez Gene 9518 Human Q99988</a>
Background:	Swiss-Prot Acc.Q99988.Regulates food intake, energy expenditure and body weight in response to metabolic and toxin-induced stresses (PubMed:28953886, PubMed:28846097, PubMed:28846098, PubMed:28846099, PubMed:23468844, PubMed:29046435). Binds to its receptor, GFRAL, and activates GFRAL-expressing neurons localized in the area postrema and nucleus tractus solitarius of the brainstem (PubMed:28953886, PubMed:28846097, PubMed:28846098, PubMed:28846099). It then triggers the activation of neurons localized within the parabrachial nucleus and central amygdala, which constitutes part of the 'emergency circuit' that shapes feeding responses to stressful conditions (PubMed:28953886). On hepatocytes, inhibits growth hormone signaling .



[View online »](#)

Synonyms: GDF-15; MIC-1; MIC1; NAG-1; NRG-1; PDF; PLAB; PTGF-beta; PTGFB

### Product images:



Western blot detection of GDF15 in HeLa cell lysates using GDF15 Rabbit mAb(1:1000 diluted). Predicted band size:34kDa. Observed band size:34kDa.