

## Product datasheet for **TA384292M**

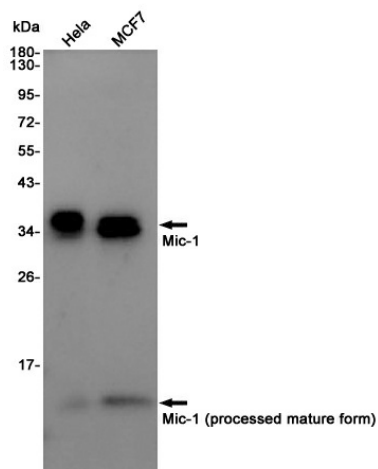
### **GDF15 Rabbit Polyclonal Antibody**

#### **Product data:**

Product Type:	Primary Antibodies
Applications:	IP, WB
Recommended Dilution:	WB: 1/1000 IP: 1/20
Reactivity:	Human
Host:	Rabbit
Isotype:	IgG
Clonality:	Polyclonal
Immunogen:	Recombinant protein of human GDF15
Formulation:	50mM Tris-Glycine(pH 7.4), 0.15M NaCl, 40% Glycerol, 0.01% Sodium azide and 0.05% BSA
Concentration:	lot specific
Purification:	Affinity Purified
Conjugation:	Unconjugated
Storage:	Store at 4°C short term. Aliquot and store at -20°C long term. Avoid freeze/thaw cycles.
Stability:	1 year
Predicted Protein Size:	Calculated MW: 34 kDa; Observed MW: 35,13 kDa
Gene Name:	growth differentiation factor 15
Database Link:	<a href="#">Entrez Gene 9518 Human Q99988</a>
Background:	Swiss-Prot Acc.Q99988.
Synonyms:	GDF-15; MIC-1; MIC1; NAG-1; NRG-1; PDF; PLAB; PTGF-beta; PTGFB



[View online »](#)

**Product images:**


Western blot detection of GDF15/Mic-1 in HeLa, MCF7 cell lysates using GDF15/Mic-1 Rabbit pAb (1:1000 diluted). Predicted band size: 34 kDa. Observed band size: 35, 13 kDa.