

Product datasheet for **TA384291**

GDF15 Rabbit Polyclonal Antibody

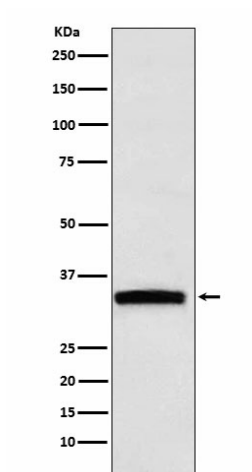
Product data:

Product Type:	Primary Antibodies
Applications:	WB
Recommended Dilution:	WB: 1/500-1/2000
Reactivity:	Human
Host:	Rabbit
Isotype:	IgG
Clonality:	Polyclonal
Immunogen:	A synthesized peptide derived from human GDF15
Formulation:	Rabbit IgG in phosphate buffered saline , pH 7.4, 150mM NaCl, 0.02% sodium azide and 50% glycerol.
Concentration:	lot specific
Purification:	Affinity Chromatography
Conjugation:	Unconjugated
Storage:	Store at 4°C short term. Aliquot and store at -20°C long term. Avoid freeze/thaw cycles.
Stability:	1 year
Predicted Protein Size:	35kDa
Gene Name:	growth differentiation factor 15
Database Link:	Entrez Gene 9518 Human Q99988
Background:	Swiss-Prot Acc.Q99988.Highly expressed in placenta, with lower levels in prostate and colon and some expression in kidney.
Synonyms:	GDF-15; MIC-1; MIC1; NAG-1; NRG-1; PDF; PLAB; PTGF-beta; PTGFB



[View online »](#)

Product images:



Western blot analysis of GDF15 in HepG2 lysates using GDF15 antibody.