

Product datasheet for **TA384285**

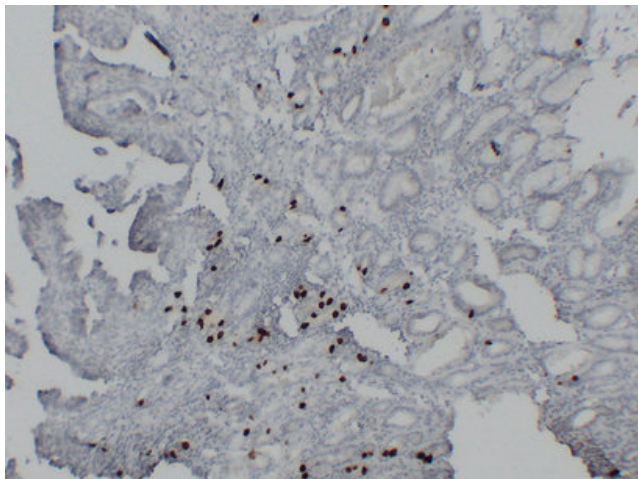
Gastrin (GAST) Mouse Polyclonal Antibody

Product data:

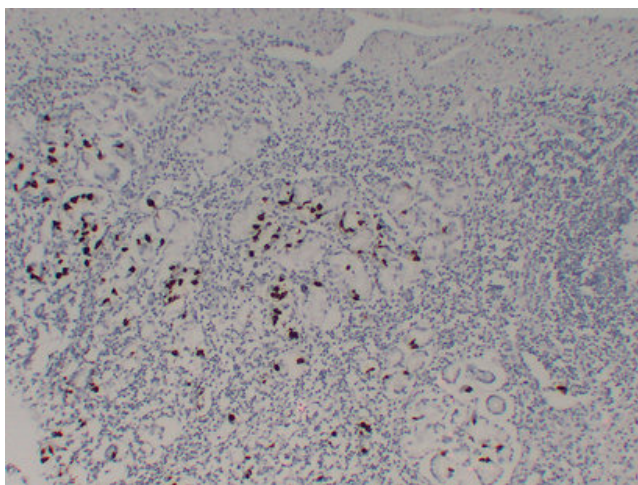
Product Type:	Primary Antibodies
Applications:	IHC
Recommended Dilution:	IHC-p: 1/100-1/500
Reactivity:	Human
Host:	Mouse
Isotype:	IgG3, kappa
Clonality:	Polyclonal
Immunogen:	Synthesized peptide derived from human Gastrin
Formulation:	Liquid in PBS containing 50% glycerol, 0.5% BSA and 0.02% sodium azide, pH 7.3.
Concentration:	lot specific
Purification:	Affinity Chromatography
Conjugation:	Unconjugated
Storage:	Store at 4°C short term. Aliquot and store at -20°C long term. Avoid freeze/thaw cycles.
Stability:	1 year
Gene Name:	gastrin
Database Link:	Entrez Gene 2520 Human P01350
Background:	Swiss-Prot Acc.P01350.
Synonyms:	GAS; gastrin



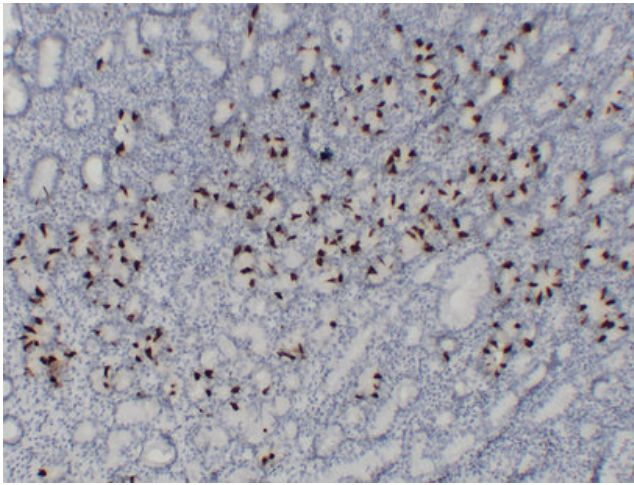
[View online »](#)

Product images:

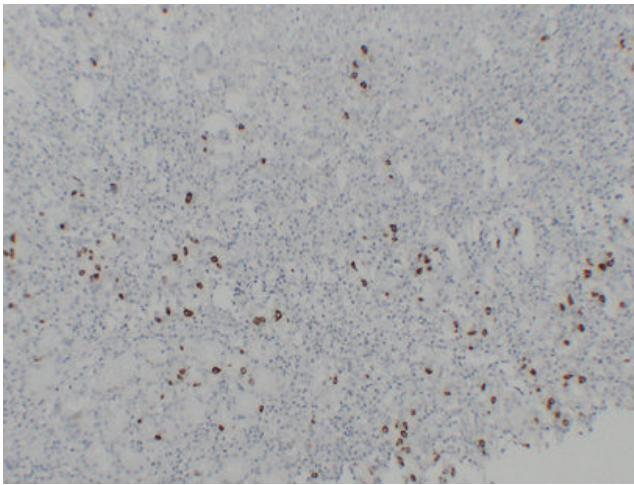
Immunohistochemical analysis of paraffin-embedded Gastric adenocarcinoma. 1, Antibody was diluted at 1:200(4°,overnight). 2, Tris-EDTA,pH8.0 was used for antigen retrieval. 3,Secondary antibody was diluted at 1:200(room temperature, 30min).



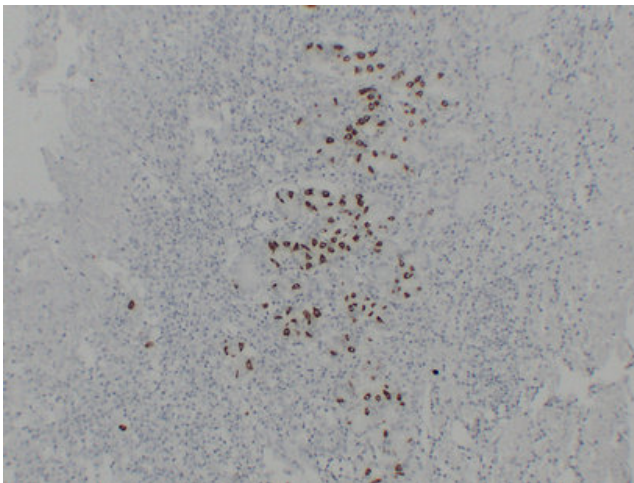
Immunohistochemical analysis of paraffin-embedded Stomach. 1, Antibody was diluted at 1:200(4°,overnight). 2, Tris-EDTA,pH8.0 was used for antigen retrieval. 3,Secondary antibody was diluted at 1:200(room temperature, 30min).



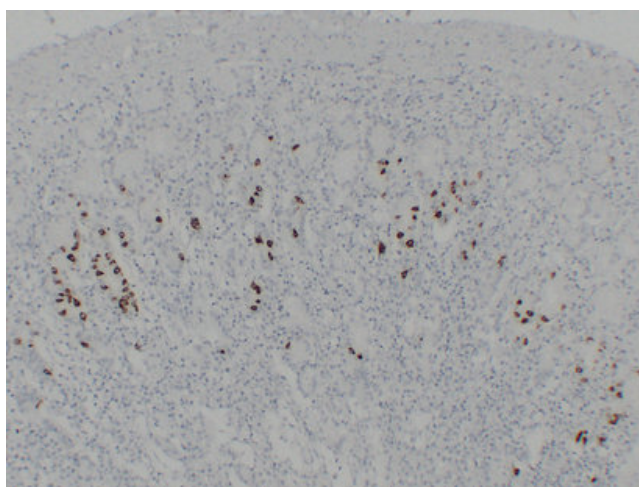
Immunohistochemical analysis of paraffin-embedded Stomach. 1, Antibody was diluted at 1:200(4°, overnight). 2, Tris-EDTA, pH8. was used for antigen retrieval. 3, Secondary antibody was diluted at 1:200(room temperature, 30min).



Immunohistochemical analysis of paraffin-embedded Stomach. 1, Antibody was diluted at 1:200(4°, overnight). 2, Tris-EDTA, pH8.0 was used for antigen retrieval. 3, Secondary antibody was diluted at 1:200(room temperature, 30min).



Immunohistochemical analysis of paraffin-embedded Stomach. 1, Antibody was diluted at 1:200(4°, overnight). 2, Tris-EDTA, pH8.0 was used for antigen retrieval. 3, Secondary antibody was diluted at 1:200(room temperature, 30min).



Immunohistochemical analysis of paraffin-embedded Stomach. 1, Antibody was diluted at 1:200(4°, overnight). 2, Tris-EDTA, pH8.0 was used for antigen retrieval. 3, Secondary antibody was diluted at 1:200(room temperature, 30min).