

## Product datasheet for **TA384284**

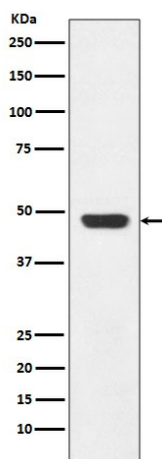
### GAP43 Rabbit Polyclonal Antibody

#### Product data:

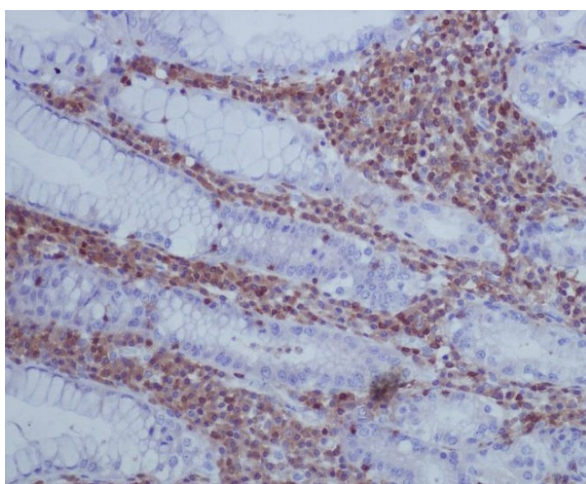
Product Type:	Primary Antibodies
Applications:	FC, IF, IHC, IP, WB
Recommended Dilution:	WB: 1/10000-1/50000 IHC: 1/50-1/200 ICC/IF: 1/50-1/200 IP: 1/30 FC: 1/20
Reactivity:	Human, Mouse, Rat
Host:	Rabbit
Isotype:	IgG
Clonality:	Polyclonal
Immunogen:	A synthesized peptide derived from human GAP43
Formulation:	Rabbit IgG in phosphate buffered saline , pH 7.4, 150mM NaCl, 0.02% sodium azide and 50% glycerol.
Concentration:	lot specific
Purification:	Affinity Chromatography
Conjugation:	Unconjugated
Storage:	Store at 4°C short term. Aliquot and store at -20°C long term. Avoid freeze/thaw cycles.
Stability:	1 year
Predicted Protein Size:	48kDa
Gene Name:	growth associated protein 43
Database Link:	<a href="#">Entrez Gene 2596 Human P17677</a>
Background:	Swiss-Prot Acc.P17677.This protein is associated with nerve growth. It is a major component of the motile
Synonyms:	B-50; neuromodulin; PP46



[View online »](#)

**Product images:**

Western blot analysis of GAP43 in SH-SY5Y lysates using GAP43 antibody.



Immunohistochemistry analysis of paraffin-embedded Human stomach using GAP43 antibody. High-pressure and temperature Sodium Citrate pH 6.0 was used for antigen retrieval.