

Product datasheet for **TA384278M**

GABARAPL2 Rabbit Monoclonal Antibody [Clone ID: R03-7J2]

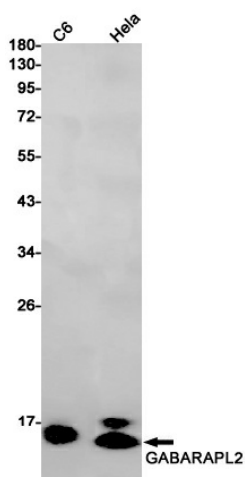
Product data:

Product Type:	Primary Antibodies
Clone Name:	R03-7J2
Applications:	WB
Recommended Dilution:	WB: 1/1000
Reactivity:	Human, Rat
Host:	Rabbit
Isotype:	IgG
Clonality:	Monoclonal
Immunogen:	A synthetic peptide of human GABARAPL2
Formulation:	50mM Tris-Glycine(pH 7.4), 0.15M NaCl, 40% Glycerol, 0.01% Sodium azide and 0.05% BSA
Concentration:	lot specific
Purification:	Affinity Purified
Conjugation:	Unconjugated
Storage:	Store at 4°C short term. Aliquot and store at -20°C long term. Avoid freeze/thaw cycles.
Stability:	1 year
Predicted Protein Size:	Calculated MW: 14 kDa; Observed MW: 14 kDa
Gene Name:	GABA type A receptor associated protein like 2
Database Link:	Entrez Gene 11345 Human P60520
Background:	Swiss-Prot Acc.P60520.Ubiquitin-like modifier involved in intra-Golgi traffic. Modulates intra-Golgi transport through coupling between NSF activity and SNAREs activation. It first stimulates the ATPase activity of NSF which in turn stimulates the association with GOSR1 . Involved in autophagy. Plays a role in mitophagy which contributes to regulate mitochondrial quantity and quality by eliminating the mitochondria to a basal level to fulfill cellular energy requirements and preventing excess ROS production. Whereas LC3s are involved in elongation of the phagophore membrane, the GABARAP/GATE-16 subfamily is essential for a later stage in autophagosome maturation.


[View online »](#)

Synonyms: ATG8; FLC3A; GATE-16; GATE16; GEF-2; GEF2

Product images:



Western blot analysis of GABARAPL2 in C6, HeLa lysates using GABARAPL2 antibody.