

## Product datasheet for **TA384277**

### **GABARAPL2 Rabbit Polyclonal Antibody**

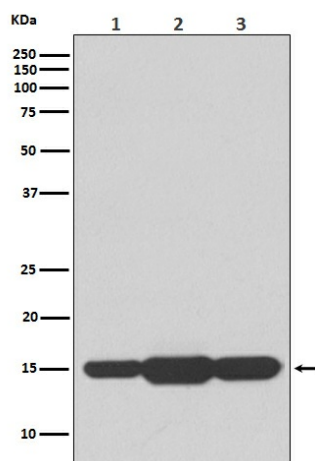
#### **Product data:**

Product Type:	Primary Antibodies
Applications:	WB
Recommended Dilution:	WB: 1/500-1/2000
Reactivity:	Human, Mouse, Rat
Host:	Rabbit
Isotype:	IgG
Clonality:	Polyclonal
Immunogen:	A synthesized peptide derived from human GABARAPL2
Formulation:	Rabbit IgG in phosphate buffered saline , pH 7.4, 150mM NaCl, 0.02% sodium azide and 50% glycerol.
Concentration:	lot specific
Purification:	Affinity Chromatography
Conjugation:	Unconjugated
Storage:	Store at 4°C short term. Aliquot and store at -20°C long term. Avoid freeze/thaw cycles.
Stability:	1 year
Predicted Protein Size:	14kDa
Gene Name:	GABA type A receptor associated protein like 2
Database Link:	<a href="#">Entrez Gene 11345 Human P60520</a>
Background:	Swiss-Prot Acc.P60520.Involved in intra-Golgi traffic. Modulates intra-Golgi transport through coupling between NSF activity and SNAREs activation. It first stimulates the ATPase activity of NSF which in turn stimulates the association with GOSR1.
Synonyms:	ATG8; FLC3A; GATE-16; GATE16; GEF-2; GEF2



[View online »](#)

## Product images:



Western blot analysis of GABARAPL2 in (1) HeLa lysates; (2) mouse spleen lysates; (3) rat brain lysates using GABARAPL2 antibody.