

## Product datasheet for **TA384275**

### Glucose 6 Phosphate Dehydrogenase (G6PD) Rabbit Polyclonal Antibody

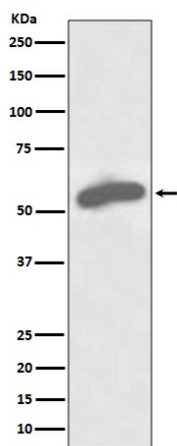
#### Product data:

Product Type:	Primary Antibodies
Applications:	FC, IF, IHC, WB
Recommended Dilution:	WB: 1/500-1/2000 IHC: 1/50-1/200 ICC/IF: 1/50-1/200 FC: 1/100
Reactivity:	Human
Host:	Rabbit
Isotype:	IgG
Clonality:	Polyclonal
Immunogen:	A synthesized peptide derived from human G6PD
Formulation:	Rabbit IgG in phosphate buffered saline , pH 7.4, 150mM NaCl, 0.02% sodium azide and 50% glycerol.
Concentration:	lot specific
Purification:	Affinity Chromatography
Conjugation:	Unconjugated
Storage:	Store at 4°C short term. Aliquot and store at -20°C long term. Avoid freeze/thaw cycles.
Stability:	1 year
Predicted Protein Size:	59kDa
Gene Name:	glucose-6-phosphate dehydrogenase
Database Link:	<a href="#">Entrez Gene 2539 Human P11413</a>
Background:	Swiss-Prot Acc.P11413.Catalyzes the rate-limiting step of the oxidative pentose-phosphate pathway, which represents a route for the dissimilation of carbohydrates besides glycolysis. The main function of this enzyme is to provide reducing power (NADPH) and pentose phosphates for fatty acid and nucleic acid synthesis.
Synonyms:	G6PD1



[View online »](#)

## Product images:



Western blot analysis of G6PD in MCF-7 lysates using Glucose 6 Phosphate Dehydrogenase antibody.