

Product datasheet for **TA384274S**

G3BP (G3BP1) Rabbit Monoclonal Antibody [Clone ID: R06-5D2]

Product data:

Product Type:	Primary Antibodies
Clone Name:	R06-5D2
Applications:	IF, IHC, IP, WB
Recommended Dilution:	WB: 1/1000 IHC: 1/20 ICC/IF: 1/20 IP: 1/20
Reactivity:	Human, Mouse, Rat
Host:	Rabbit
Isotype:	IgG
Clonality:	Monoclonal
Immunogen:	A synthetic peptide of human G3BP
Formulation:	50mM Tris-Glycine(pH 7.4), 0.15M NaCl, 40% Glycerol, 0.01% Sodium azide and 0.05% BSA
Concentration:	lot specific
Purification:	Affinity Purified
Conjugation:	Unconjugated
Storage:	Store at 4°C short term. Aliquot and store at -20°C long term. Avoid freeze/thaw cycles.
Stability:	1 year
Predicted Protein Size:	Calculated MW: 52 kDa; Observed MW: 68 kDa
Gene Name:	G3BP stress granule assembly factor 1
Database Link:	Entrez Gene 10146 Human Q13283



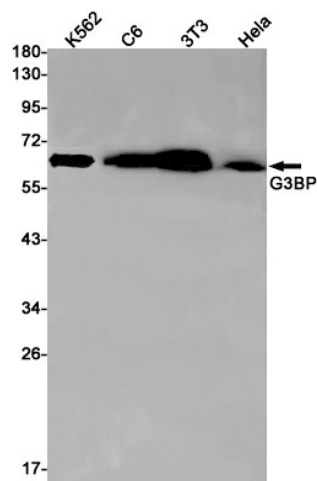
[View online »](#)

Background:

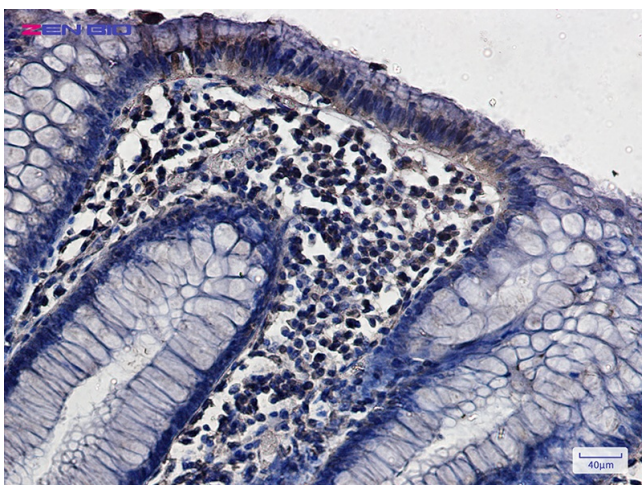
Swiss-Prot Acc.Q13283.ATP- and magnesium-dependent helicase (PubMed:9889278). Unwinds preferentially partial DNA and RNA duplexes having a 17 bp annealed portion and either a hanging 3' tail or hanging tails at both 5'- and 3'-ends (PubMed:9889278). Unwinds DNA/DNA, RNA/DNA, and RNA/RNA substrates with comparable efficiency (PubMed:9889278). Acts unidirectionally by moving in the 5' to 3' direction along the bound single-stranded DNA (PubMed:9889278). Phosphorylation-dependent sequence-specific endoribonuclease in vitro (PubMed:11604510). Cleaves exclusively between cytosine and adenine and cleaves MYC mRNA preferentially at the 3'-UTR (PubMed:11604510). May be a regulated effector of stress granule assembly (PubMed:12642610, PubMed:20180778).

Synonyms:

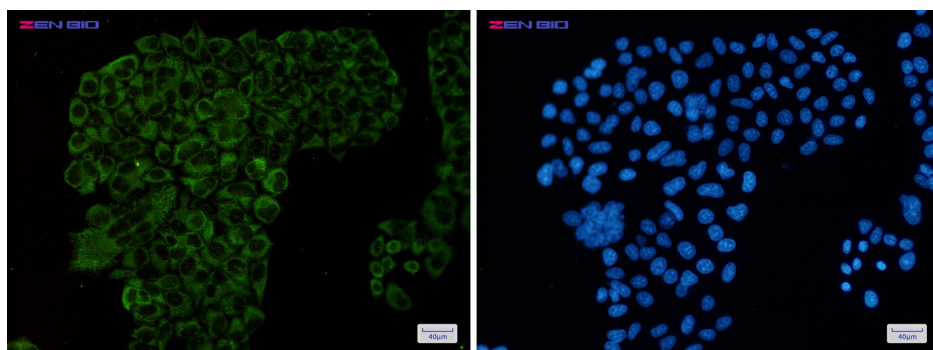
G3BP; G3BP-1; HDH-VIII; MGC111040

Product images:

Western blot analysis of G3BP in K562, C6, 3T3, HeLa lysates using G3BP antibody.



Immunohistochemistry of G3BP in paraffin-embedded Human colon cancer tissue using G3BP Rabbit mAb at dilution 1/20



Immunocytochemistry of G3BP (green) in HeLa cells using G3BP Rabbit mAb at dilution 1/5, and DAPI(blue)