

Product datasheet for **TA384269M**

FUNDC1 Rabbit Polyclonal Antibody

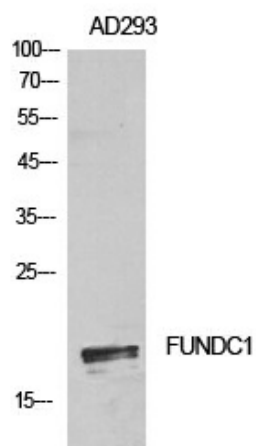
Product data:

Product Type:	Primary Antibodies
Applications:	ELISA, WB
Recommended Dilution:	WB: 1/500-1/2000 ELISA: 1/10000
Reactivity:	Human, Mouse, Rat
Host:	Rabbit
Isotype:	IgG
Clonality:	Polyclonal
Immunogen:	The antiserum was produced against synthesized peptide derived from the N-terminal region of human FUNDC1. AA range:1-50
Formulation:	Liquid in PBS containing 50% glycerol, 0.5% BSA and 0.02% sodium azide, pH 7.3.
Concentration:	lot specific
Purification:	Affinity Purified
Conjugation:	Unconjugated
Storage:	Store at 4°C short term. Aliquot and store at -20°C long term. Avoid freeze/thaw cycles.
Stability:	1 year
Predicted Protein Size:	Observed MW (kDa):17
Database Link:	Q8IVP5
Background:	Swiss-Prot Acc.Q8IVP5.

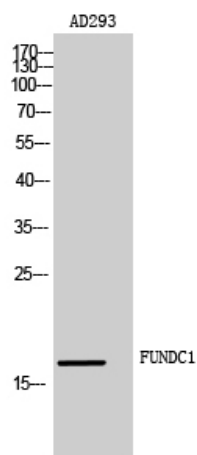


[View online »](#)

Product images:



Western blot analysis of FUNDC1 in AD293 lysates using FUNDC1 antibody.



Western blot analysis of FUNDC1 in AD293 lysates using FUNDC1 antibody.