

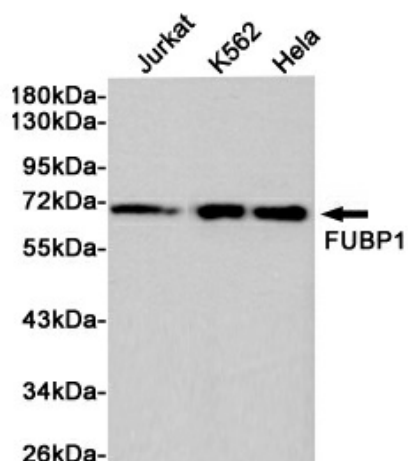
## Product datasheet for **TA384266M**

### FUBP1 Rabbit Polyclonal Antibody

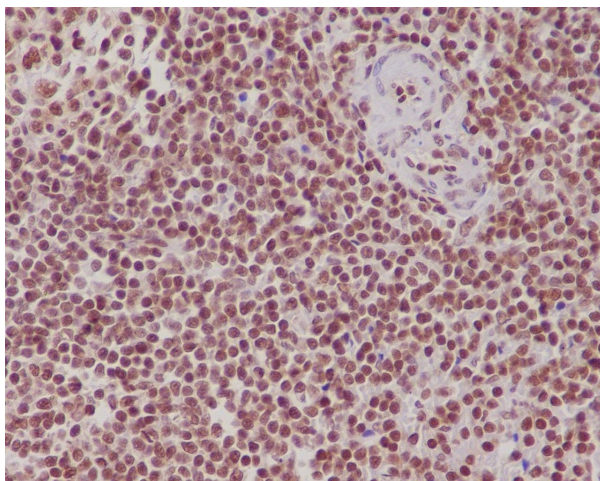
#### Product data:

Product Type:	Primary Antibodies
Applications:	FC, IF, IHC, WB
Recommended Dilution:	WB: 1/500-1/2000 IHC: 1/50-1/200 ICC/IF: 1/50-1/200 FC: 1/50
Reactivity:	Human, Mouse, Rat
Host:	Rabbit
Isotype:	IgG
Clonality:	Polyclonal
Immunogen:	A synthesized peptide derived from human FUBP1
Formulation:	Rabbit IgG in phosphate buffered saline , pH 7.4, 150mM NaCl, 0.02% sodium azide and 50% glycerol.
Concentration:	lot specific
Purification:	Affinity Chromatography
Conjugation:	Unconjugated
Storage:	Store at 4°C short term. Aliquot and store at -20°C long term. Avoid freeze/thaw cycles.
Stability:	1 year
Predicted Protein Size:	74kDa
Gene Name:	far upstream element binding protein 1
Database Link:	<a href="#">Entrez Gene 8880 Human Q96AE4</a>
Background:	Swiss-Prot Acc.Q96AE4.Regulates MYC expression by binding to a single-stranded far-upstream element upstream of the MYC promoter. May act both as activator and repressor of transcription.
Synonyms:	FBP; FUBP

[View online »](#)

**Product images:**


Western blot analysis of FUBP1 in Jurkat, K562 and HeLa lysates using FUBP1 antibody.



Immunohistochemistry analysis of paraffin-embedded Human spleen using FUBP1 antibody. High-pressure and temperature Sodium Citrate pH 6.0 was used for antigen retrieval.