

## Product datasheet for **TA384263S**

### Ferritin Heavy Chain (FTH1) Rabbit Monoclonal Antibody [Clone ID: R03-3D9]

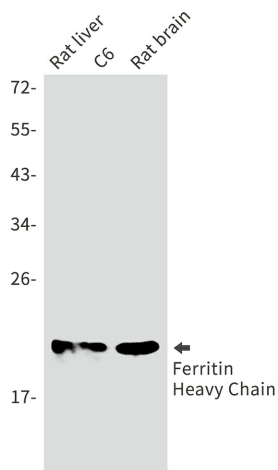
#### Product data:

|                         |                                                                                                                                                                                                                                                                                                                                                        |
|-------------------------|--------------------------------------------------------------------------------------------------------------------------------------------------------------------------------------------------------------------------------------------------------------------------------------------------------------------------------------------------------|
| Product Type:           | Primary Antibodies                                                                                                                                                                                                                                                                                                                                     |
| Clone Name:             | R03-3D9                                                                                                                                                                                                                                                                                                                                                |
| Applications:           | IF, WB                                                                                                                                                                                                                                                                                                                                                 |
| Recommended Dilution:   | WB: 1/1000<br>ICC/IF: 1/20                                                                                                                                                                                                                                                                                                                             |
| Reactivity:             | Human, Mouse, Rat, Hamster                                                                                                                                                                                                                                                                                                                             |
| Host:                   | Rabbit                                                                                                                                                                                                                                                                                                                                                 |
| Isotype:                | IgG                                                                                                                                                                                                                                                                                                                                                    |
| Clonality:              | Monoclonal                                                                                                                                                                                                                                                                                                                                             |
| Immunogen:              | A synthetic peptide of human Ferritin                                                                                                                                                                                                                                                                                                                  |
| Formulation:            | 50mM Tris-Glycine(pH 7.4), 0.15M NaCl, 40% Glycerol, 0.01% Sodium azide and 0.05% BSA                                                                                                                                                                                                                                                                  |
| Concentration:          | lot specific                                                                                                                                                                                                                                                                                                                                           |
| Purification:           | Affinity Purified                                                                                                                                                                                                                                                                                                                                      |
| Conjugation:            | Unconjugated                                                                                                                                                                                                                                                                                                                                           |
| Storage:                | Store at 4°C short term. Aliquot and store at -20°C long term. Avoid freeze/thaw cycles.                                                                                                                                                                                                                                                               |
| Stability:              | 1 year                                                                                                                                                                                                                                                                                                                                                 |
| Predicted Protein Size: | Calculated MW: 21 kDa; Observed MW: 21 kDa                                                                                                                                                                                                                                                                                                             |
| Gene Name:              | ferritin heavy chain 1                                                                                                                                                                                                                                                                                                                                 |
| Database Link:          | <a href="#">Entrez Gene 2495 Human P02794</a>                                                                                                                                                                                                                                                                                                          |
| Background:             | Swiss-Prot Acc.P02794.Stores iron in a soluble, non-toxic, readily available form. Important for iron homeostasis. Has ferroxidase activity. Iron is taken up in the ferrous form and deposited as ferric hydroxides after oxidation. Also plays a role in delivery of iron to cells. Mediates iron uptake in capsule cells of the developing kidney . |
| Synonyms:               | apoferritin; FHC; FTH; FTHL6; MGC104426; PIG15; PLIF                                                                                                                                                                                                                                                                                                   |

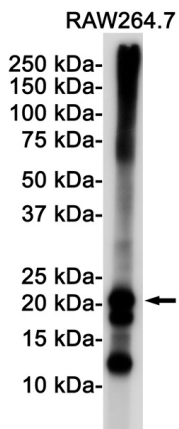


[View online »](#)

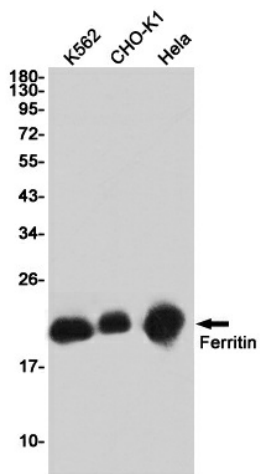
Product images:



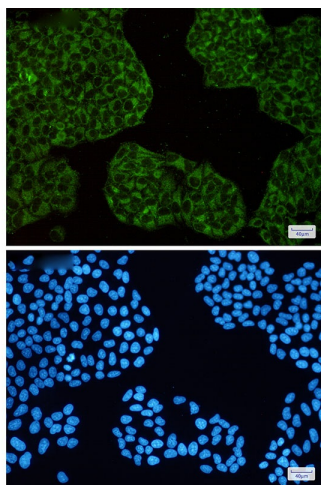
Western blot analysis of Ferritin Heavy Chain in rat liver, C6, rat brain lysates using Ferritin Heavy Chain antibody.



Western blot analysis of Ferritin in Raw264.7 lysates using Ferritin antibody.



Western blot analysis of Ferritin in K562, CHO-K1, HeLa lysates using Ferritin antibody



Immunocytochemistry analysis of Ferritin(green) in HeLa using Ferritin antibody, and DAPI(blue).