

## Product datasheet for **TA384262S**

### Ferritin Heavy Chain (FTH1) Rabbit Polyclonal Antibody

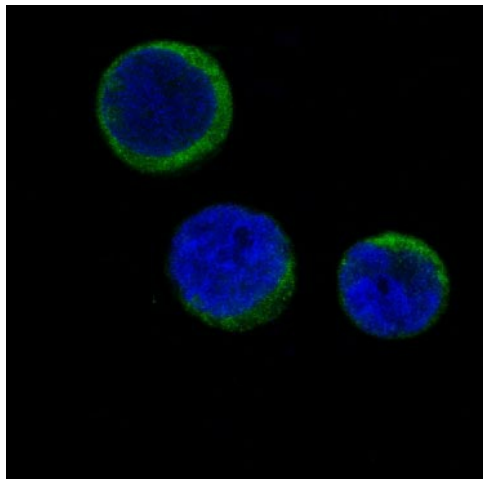
#### Product data:

Product Type:	Primary Antibodies
Applications:	IF, WB
Recommended Dilution:	WB: 1/500-1/2000 ICC/IF: 1/50-1/200
Reactivity:	Human, Mouse, Rat
Host:	Rabbit
Isotype:	IgG
Clonality:	Polyclonal
Immunogen:	A synthesized peptide derived from human Ferritin
Formulation:	Rabbit IgG in phosphate buffered saline , pH 7.4, 150mM NaCl, 0.02% sodium azide and 50% glycerol.
Concentration:	lot specific
Purification:	Affinity Chromatography
Conjugation:	Unconjugated
Storage:	Store at 4°C short term. Aliquot and store at -20°C long term. Avoid freeze/thaw cycles.
Stability:	1 year
Predicted Protein Size:	21kDa
Gene Name:	ferritin heavy chain 1
Database Link:	<a href="#">Entrez Gene 2495 Human P02794</a>
Background:	Swiss-Prot Acc.P02794.The assembled ferritin molecule, often referred to as a nanocage, can store up to 4,500 atoms of iron. It forms a holoenzyme of ~450 kDa, consisting of 24 subunits made up of two types of polypeptide chains: ferritin heavy chain and ferritin light chain, each having unique functions. Ferritin heavy chains catalyze the first step in iron storage, the oxidation of Fe(II), whereas ferritin light chains promote the nucleation of ferrihydrite, enabling storage of Fe(III).
Synonyms:	apoferritin; FHC; FTH; FTHL6; MGC104426; PIG15; PLIF

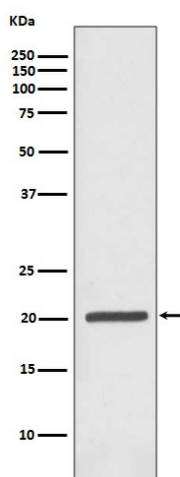


[View online »](#)

## Product images:



Immunofluorescent analysis of Jurkat cells, using Ferritin Antibody.



Western blot analysis of Ferritin expression in Jurkat cell lysate.