

## Product datasheet for **TA384261**

### Follistatin (FST) Rabbit Polyclonal Antibody

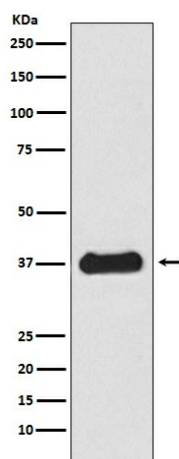
#### Product data:

Product Type:	Primary Antibodies
Applications:	WB
Recommended Dilution:	WB: 1/500-1/2000
Reactivity:	Human, Rat
Host:	Rabbit
Isotype:	IgG
Clonality:	Polyclonal
Immunogen:	A synthesized peptide derived from human Follistatin
Formulation:	Rabbit IgG in phosphate buffered saline , pH 7.4, 150mM NaCl, 0.02% sodium azide and 50% glycerol.
Concentration:	lot specific
Purification:	Affinity Chromatography
Conjugation:	Unconjugated
Storage:	Store at 4°C short term. Aliquot and store at -20°C long term. Avoid freeze/thaw cycles.
Stability:	1 year
Predicted Protein Size:	38kDa
Gene Name:	follistatin
Database Link:	<a href="#">Entrez Gene 10468 Human P19883</a>
Background:	Swiss-Prot Acc.P19883.Binds directly to activin and functions as an activin antagonist. Specific inhibitor of the biosynthesis and secretion of pituitary follicle stimulating hormone (FSH).
Synonyms:	follistatin; FS



[View online »](#)

## Product images:



Western blot analysis of Follistatin in HepG2 lysates using Follistatin antibody.