

Product datasheet for **TA384260**

FSH Receptor (FSHR) Rabbit Polyclonal Antibody

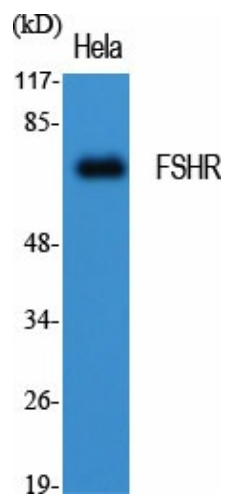
Product data:

Product Type:	Primary Antibodies
Applications:	ELISA, IF, WB
Recommended Dilution:	WB: 1/500-1/2000
Reactivity:	Human, Mouse, Rat
Host:	Rabbit
Isotype:	IgG
Clonality:	Polyclonal
Immunogen:	KLH coupled human protein peptide 120-200Interacts with ARRB2.
Formulation:	Liquid in PBS containing 50% glycerol, 0.5% BSA and 0.02% sodium azide, pH 7.3.
Concentration:	lot specific
Purification:	Affinity Purified
Conjugation:	Unconjugated
Storage:	Store at 4°C short term. Aliquot and store at -20°C long term. Avoid freeze/thaw cycles.
Stability:	1 year
Predicted Protein Size:	78 kDa
Gene Name:	follicle stimulating hormone receptor
Database Link:	Entrez Gene 2492 Human P23945
Synonyms:	FSH-R; FSHRO; LGR1; MGC141667; MGC141668; ODG1



[View online »](#)

Product images:



Western blot analysis of FSHR in HeLa lysates using FSHR antibody.