

## Product datasheet for **TA384259**

### FSH beta (FSHB) Rabbit Polyclonal Antibody

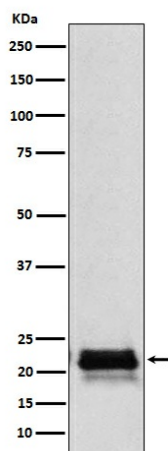
#### Product data:

Product Type:	Primary Antibodies
Applications:	IP, WB
Recommended Dilution:	WB: 1/500-1/2000 IP: 1/50
Reactivity:	Human
Host:	Rabbit
Isotype:	IgG
Clonality:	Polyclonal
Immunogen:	A synthesized peptide derived from human FSH beta [FSHB]
Formulation:	Rabbit IgG in phosphate buffered saline , pH 7.4, 150mM NaCl, 0.02% sodium azide and 50% glycerol.
Concentration:	lot specific
Purification:	Affinity Chromatography
Conjugation:	Unconjugated
Storage:	Store at 4°C short term. Aliquot and store at -20°C long term. Avoid freeze/thaw cycles.
Stability:	1 year
Predicted Protein Size:	22kDa
Gene Name:	follicle stimulating hormone beta subunit
Database Link:	<a href="#">Entrez Gene 2488 Human P01225</a>
Background:	Swiss-Prot Acc.P01225.Follicle stimulating hormone enables ovarian folliculogenesis to the antral follicle stage and is essential for Sertoli cell proliferation and maintenance of sperm quality in the Tis.
Synonyms:	FSH-B; FSH-beta



[View online »](#)

## Product images:



Western blot analysis of FSH beta (FSHB) in Human pituitary lysates using FSH beta antibody.