

## Product datasheet for **TA384258S**

### Fascin (FSCN1) Rabbit Polyclonal Antibody

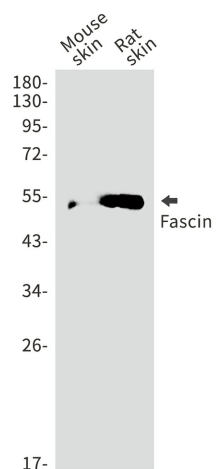
#### Product data:

Product Type:	Primary Antibodies
Applications:	FC, IF, IHC, IP, WB
Recommended Dilution:	WB: 1/2000-1/10000 IHC: 1/50-1/200 ICC/IF: 1/50 FC: 1/20-1/100 IP: 1/20-1/50
Reactivity:	Human, Mouse, Rat, Monkey
Host:	Rabbit
Isotype:	IgG
Clonality:	Polyclonal
Immunogen:	Recombinant protein of human Fascin
Formulation:	50mM Tris-Glycine(pH 7.4), 0.15M NaCl, 40% Glycerol, 0.01% Sodium azide and 0.05% BSA
Concentration:	lot specific
Purification:	Affinity Purified
Conjugation:	Unconjugated
Storage:	Store at 4°C short term. Aliquot and store at -20°C long term. Avoid freeze/thaw cycles.
Stability:	1 year
Predicted Protein Size:	Calculated MW: 54 kDa; Observed MW: 54 kDa
Gene Name:	fascin actin-bundling protein 1
Database Link:	<a href="#">Entrez Gene 6624 Human Q16658</a>
Background:	Swiss-Prot Acc.Q16658.
Synonyms:	FAN1; FLJ38511; HSN; p55; SNL

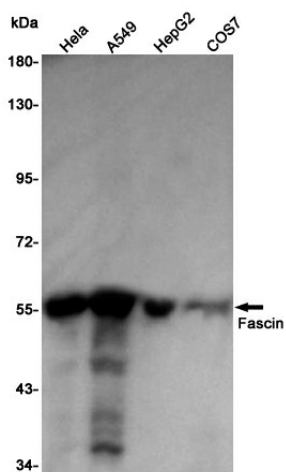


[View online »](#)

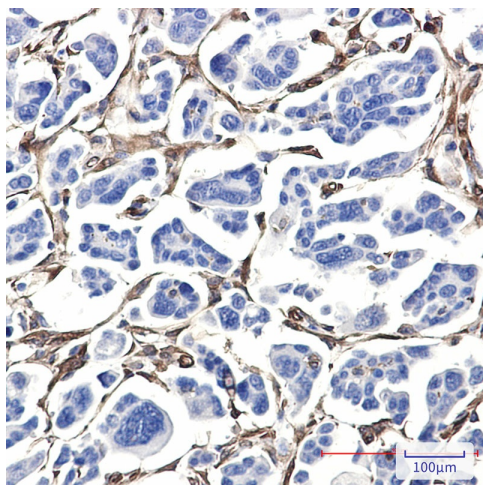
Product images:



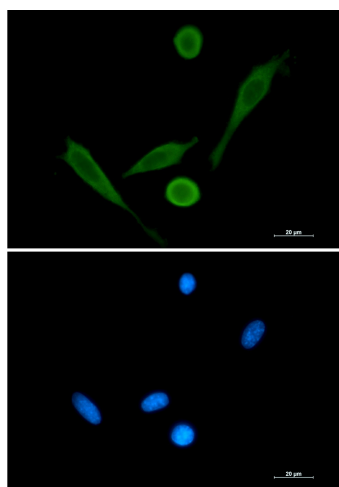
Western blot analysis of Fascin in mouse skin, rat skin lysates using Fascin antibody.



Western blot analysis of Fascin in HeLa, A549, HepG2, COS7 lysates using Fascin antibody



Immunohistochemistry analysis of paraffin-embedded Human Cholangiocarcinoma using Fascin antibody. High-pressure and temperature Sodium Citrate pH 6.0 was used for antigen retrieval.



Immunocytochemistry analysis of Fascin (green) in 3T3 using Fascin antibody, and DAPI (blue).