

Product datasheet for **TA384256**

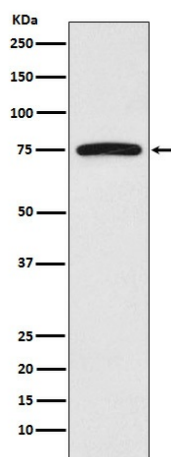
FRS2 Rabbit Polyclonal Antibody

Product data:

Product Type:	Primary Antibodies
Applications:	FC, IP, WB
Recommended Dilution:	WB: 1/500-1/2000 IP: 1/50 FC: 1/20
Reactivity:	Human
Host:	Rabbit
Isotype:	IgG
Clonality:	Polyclonal
Immunogen:	A synthesized peptide derived from human FRS2
Formulation:	Rabbit IgG in phosphate buffered saline , pH 7.4, 150mM NaCl, 0.02% sodium azide and 50% glycerol.
Concentration:	lot specific
Purification:	Affinity Chromatography
Conjugation:	Unconjugated
Storage:	Store at 4°C short term. Aliquot and store at -20°C long term. Avoid freeze/thaw cycles.
Stability:	1 year
Predicted Protein Size:	57kDa
Gene Name:	fibroblast growth factor receptor substrate 2
Database Link:	Entrez Gene 10818 Human Q8WU20
Background:	Swiss-Prot Acc.Q8WU20.Adapter protein that links FGR and NGF receptors to downstream signaling pathways. Involved in the activation of MAP kinases. Modulates signaling via SHC1 by competing for a common binding site on NTRK1.
Synonyms:	FRS2A; FRS2alpha; SNT; SNT-1; SNT1



[View online »](#)

Product images:

Western blot analysis of FRS2 in HeLa lysates using FRS2 antibody.