

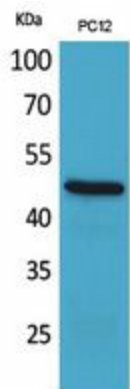
## Product datasheet for **TA384255M**

### FOXP3 Rabbit Polyclonal Antibody

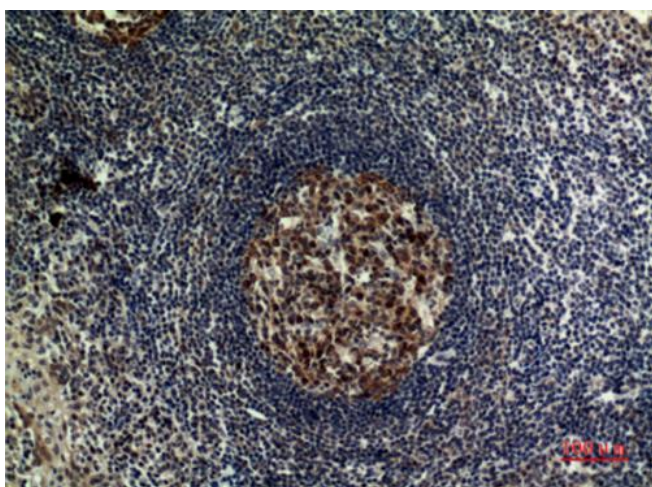
#### Product data:

Product Type:	Primary Antibodies
Applications:	ELISA, IHC, WB
Recommended Dilution:	WB: 1/500-1/2000 IHC-p: 1/100-1/300 ELISA: 1/20000
Reactivity:	Human, Mouse, Rat
Host:	Rabbit
Isotype:	IgG
Clonality:	Polyclonal
Immunogen:	The antiserum was produced against synthesized peptide derived from the C-terminal region of human FOXP3. AA range:381-430
Formulation:	Liquid in PBS containing 50% glycerol, 0.5% BSA and 0.02% sodium azide, pH 7.3.
Concentration:	lot specific
Purification:	Affinity Purified
Conjugation:	Unconjugated
Storage:	Store at 4°C short term. Aliquot and store at -20°C long term. Avoid freeze/thaw cycles.
Stability:	1 year
Predicted Protein Size:	Observed MW (kDa):47
Gene Name:	forkhead box P3
Database Link:	<a href="#">Entrez Gene 50943 Human Q9BZS1</a>
Background:	Swiss-Prot Acc.Q9BZS1.
Synonyms:	AIID; DIETER; FOXP3delta7; IPEX; JM2; MGC141961; MGC141963; PIDX; SCURFIN; XPID

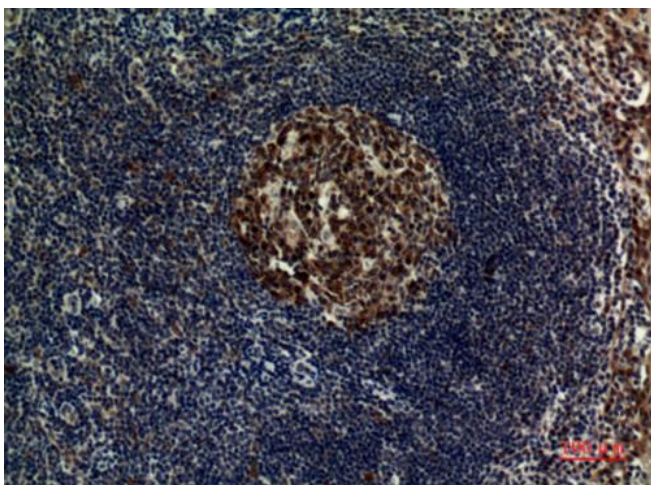
[View online »](#)

**Product images:**


Western Blot analysis of PC12 cells using FOXP3 Polyclonal Antibody. Secondary antibody was diluted at 1:20000



Immunohistochemical analysis of paraffin-embedded human-tonsilla, antibody was diluted at 1:100



Immunohistochemical analysis of paraffin-embedded human-tonsilla, antibody was diluted at 1:1