

Product datasheet for **TA384253**

FOXO1 Rabbit Polyclonal Antibody

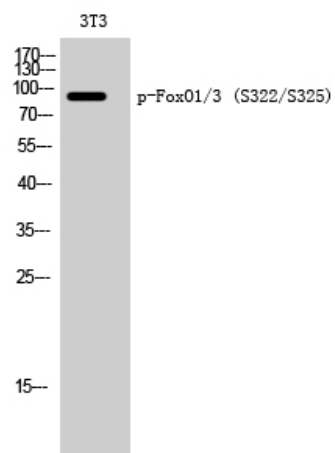
Product data:

Product Type:	Primary Antibodies
Applications:	ELISA, IHC, WB
Recommended Dilution:	WB: 1/500-1/2000 IHC: 1/100-1/300 ELISA: 1/5000
Reactivity:	Human, Mouse, Rat
Host:	Rabbit
Isotype:	IgG
Clonality:	Polyclonal
Immunogen:	The antiserum was produced against synthesized peptide derived from human FOXO1A/3A around the phosphorylation site of Ser322 and Ser325. AA range:291-340 (Phosphorylated)
Formulation:	Liquid in PBS containing 50% glycerol, 0.5% BSA and 0.02% sodium azide, pH 7.3.
Concentration:	lot specific
Purification:	Affinity Purified
Conjugation:	Unconjugated
Storage:	Store at 4°C short term. Aliquot and store at -20°C long term. Avoid freeze/thaw cycles.
Stability:	1 year
Predicted Protein Size:	Observed MW (kDa):97
Gene Name:	forkhead box O1
Database Link:	Entrez Gene 2308 Human Q12778
Background:	Swiss-Prot Acc.Q12778/O43524.
Synonyms:	FKH1; FKHR; FOXO1A



[View online »](#)

Product images:



Western blot analysis of Phospho-FOXO1/3 (Ser322/S325) in 3T3 lysates using Phospho-FOXO1/3 (Ser322/S325) antibody.