

## Product datasheet for **TA384251M**

### FOXO1 Rabbit Polyclonal Antibody

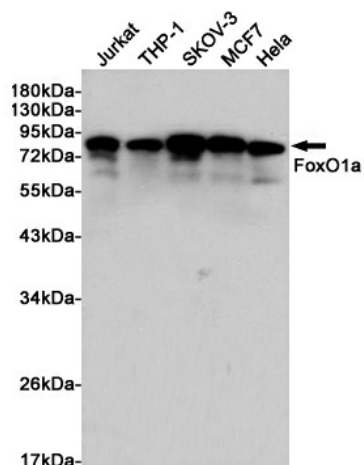
#### Product data:

Product Type:	Primary Antibodies
Applications:	IF, IHC, WB
Recommended Dilution:	WB: 1/1000-1/2000 IHC: 1/50-1/200 ICC/IF: 1/50-1/200
Reactivity:	Human, Mouse, Rat
Host:	Rabbit
Isotype:	IgG
Clonality:	Polyclonal
Immunogen:	A synthesized peptide derived from human FoxO1a
Formulation:	Rabbit IgG in phosphate buffered saline , pH 7.4, 150mM NaCl, 0.02% sodium azide and 50% glycerol.
Concentration:	lot specific
Purification:	Affinity Chromatography
Conjugation:	Unconjugated
Storage:	Store at 4°C short term. Aliquot and store at -20°C long term. Avoid freeze/thaw cycles.
Stability:	1 year
Predicted Protein Size:	70kDa
Gene Name:	forkhead box O1
Database Link:	<a href="#">Entrez Gene 2308 Human Q12778</a>
Background:	Swiss-Prot Acc.Q12778.Transcription factor which acts as a regulator of cell responses to oxidative stress. In the presence of KIRT1, mediates down-regulation of cyclin D1 and up-regulation of CDKN1B levels which are required for cell transition from proliferative growth to quiescence.
Synonyms:	FKH1; FKHR; FOXO1A

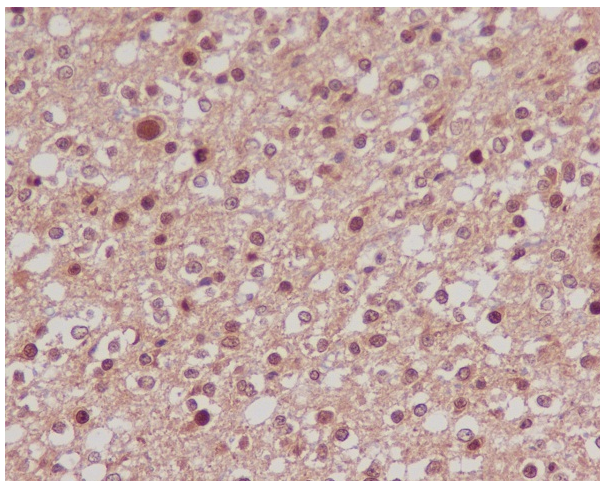


[View online »](#)

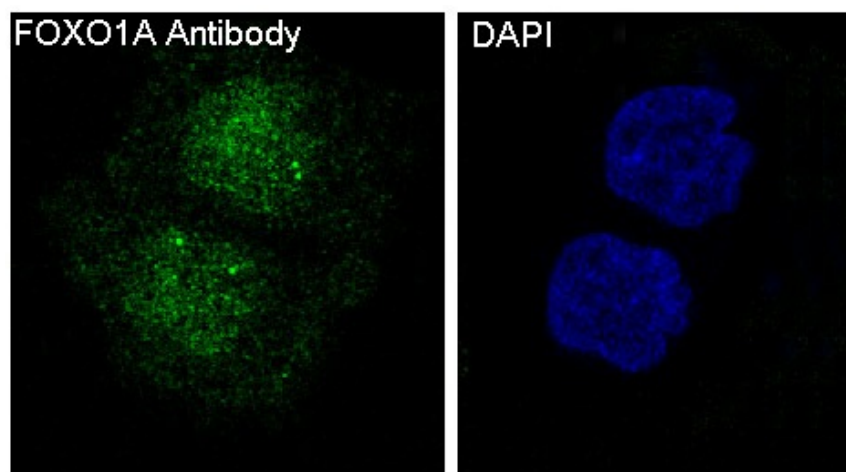
## Product images:



Western blot analysis of FoxO1a in Jurkat, THP-1, SKOV-3, MCF-7 and HeLa lysates using FOXO1 antibody.



Immunohistochemistry analysis of paraffin-embedded Human brain carcinoma using FoxO1a antibody. High-pressure and temperature Sodium Citrate pH 6.0 was used for antigen retrieval.



Immunofluorescence analysis of FOXO1 in HeLa using FoxO1a antibody.