

Product datasheet for **TA384250M**

FOXO1 Rabbit Polyclonal Antibody

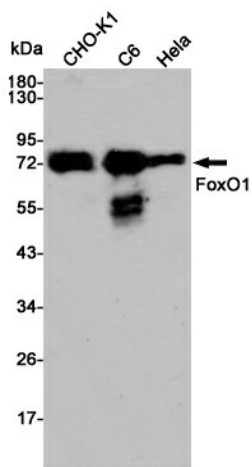
Product data:

Product Type:	Primary Antibodies
Applications:	ChIP, ELISA, IF, IHC, WB
Recommended Dilution:	WB: 1/500-1/2000 IHC: 1/100-1/300 IF: 1/200-1/1000 ELISA: 1/20000
Reactivity:	Human, Mouse, Rat, Pig
Host:	Rabbit
Isotype:	IgG
Clonality:	Polyclonal
Immunogen:	The antiserum was produced against synthesized peptide derived from human FKHR. AA range:223-272
Formulation:	Liquid in PBS containing 50% glycerol, 0.5% BSA and 0.02% sodium azide, pH 7.3.
Concentration:	lot specific
Purification:	Affinity Purified
Conjugation:	Unconjugated
Storage:	Store at 4°C short term. Aliquot and store at -20°C long term. Avoid freeze/thaw cycles.
Stability:	1 year
Predicted Protein Size:	Observed MW (kDa):78
Gene Name:	forkhead box O1
Database Link:	Entrez Gene 2308 Human Q12778
Background:	Swiss-Prot Acc.Q12778.
Synonyms:	FKH1; FKHR; FOXO1A

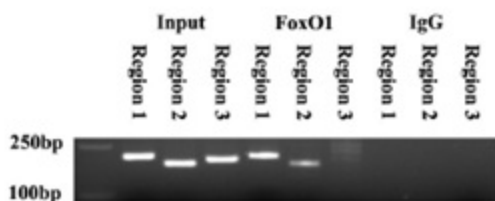


[View online »](#)

Product images:



Western blot analysis of FoxO1 in CHO-K1, C6 and HeLa lysates using FoxO1 antibody.



ChIP-PCR detected the FoxO1 binding sites in the AdipoQ promoter region.