

Product datasheet for **TA384248**

FOXA1 Rabbit Polyclonal Antibody

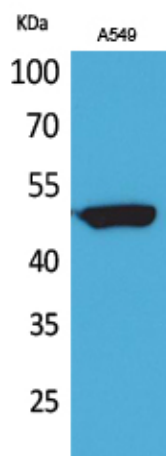
Product data:

Product Type:	Primary Antibodies
Applications:	ELISA, WB
Recommended Dilution:	WB: 1/500-1/2000 ELISA: 1/20000
Reactivity:	Human, Mouse, Rat
Host:	Rabbit
Isotype:	IgG
Clonality:	Polyclonal
Immunogen:	The antiserum was produced against synthesized peptide derived from human FOXA1 around the non-acetylation site of Lys265. AA range:231-280
Formulation:	Liquid in PBS containing 50% glycerol, 0.5% BSA and 0.02% sodium azide, pH 7.3.
Concentration:	lot specific
Purification:	Affinity Purified
Conjugation:	Unconjugated
Storage:	Store at 4°C short term. Aliquot and store at -20°C long term. Avoid freeze/thaw cycles.
Stability:	1 year
Predicted Protein Size:	Observed MW (kDa):50
Gene Name:	forkhead box A1
Database Link:	Entrez Gene 3169 Human P55317
Background:	Swiss-Prot Acc.P55317.
Synonyms:	HNF-3-alpha; HNF-3A; HNF3A; MGC33105; TCF3A



[View online »](#)

Product images:



Western blot analysis of FOXA in A549 lysates using FOXA antibody.