

## Product datasheet for **TA384246M**

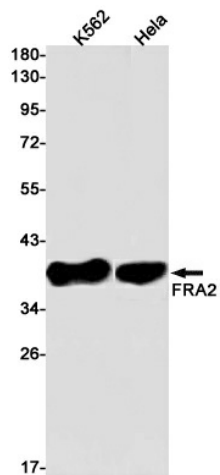
### **FRA2 (FOSL2) Rabbit Monoclonal Antibody [Clone ID: R07-2A4]**

#### **Product data:**

Product Type:	Primary Antibodies
Clone Name:	R07-2A4
Applications:	IP, WB
Recommended Dilution:	WB: 1/1000 IP: 1/20
Reactivity:	Human
Host:	Rabbit
Isotype:	IgG
Clonality:	Monoclonal
Immunogen:	A synthetic peptide of human FRA2
Formulation:	50mM Tris-Glycine(pH 7.4), 0.15M NaCl, 40% Glycerol, 0.01% Sodium azide and 0.05% BSA
Concentration:	lot specific
Purification:	Affinity Purified
Conjugation:	Unconjugated
Storage:	Store at 4°C short term. Aliquot and store at -20°C long term. Avoid freeze/thaw cycles.
Stability:	1 year
Predicted Protein Size:	Calculated MW: 35 kDa; Observed MW: 35-45 kDa
Gene Name:	FOS like 2, AP-1 transcription factor subunit
Database Link:	<a href="#">Entrez Gene 2355 Human P15408</a>
Background:	Swiss-Prot Acc.P15408.Controls osteoclast survival and size. As a dimer with JUN, activates LIF transcription. Activates CEBPB transcription in PGE2-activated osteoblasts.
Synonyms:	FLJ23306; FRA2


[View online »](#)

## Product images:



Western blot detection of FRA2 in K562, HeLa cell lysates using FRA2 Rabbit mAb(1:1000 diluted). Predicted band size: 35 kDa. Observed band size: 35-45 kDa.