

## Product datasheet for **TA384246**

### **FRA2 (FOSL2) Rabbit Monoclonal Antibody [Clone ID: R07-2A4]**

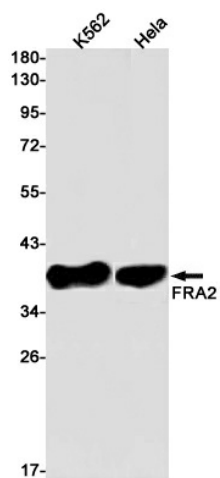
#### **Product data:**

<b>Product Type:</b>	Primary Antibodies
<b>Clone Name:</b>	R07-2A4
<b>Applications:</b>	IP, WB
<b>Recommended Dilution:</b>	WB: 1/1000 IP: 1/20
<b>Reactivity:</b>	Human
<b>Host:</b>	Rabbit
<b>Isotype:</b>	IgG
<b>Clonality:</b>	Monoclonal
<b>Immunogen:</b>	A synthetic peptide of human FRA2
<b>Formulation:</b>	50mM Tris-Glycine(pH 7.4), 0.15M NaCl, 40% Glycerol, 0.01% Sodium azide and 0.05% BSA
<b>Concentration:</b>	lot specific
<b>Purification:</b>	Affinity Purified
<b>Conjugation:</b>	Unconjugated
<b>Storage:</b>	Store at 4°C short term. Aliquot and store at -20°C long term. Avoid freeze/thaw cycles.
<b>Stability:</b>	1 year
<b>Predicted Protein Size:</b>	Calculated MW: 35 kDa; Observed MW: 35-45 kDa
<b>Gene Name:</b>	FOS like 2, AP-1 transcription factor subunit
<b>Database Link:</b>	<a href="#">Entrez Gene 2355 Human P15408</a>
<b>Background:</b>	Swiss-Prot Acc.P15408.Controls osteoclast survival and size. As a dimer with JUN, activates LIF transcription. Activates CEBPB transcription in PGE2-activated osteoblasts.
<b>Synonyms:</b>	FLJ23306; FRA2



[View online »](#)

## Product images:



Western blot detection of FRA2 in K562, HeLa cell lysates using FRA2 Rabbit mAb(1:1000 diluted). Predicted band size: 35 kDa. Observed band size: 35-45 kDa.