

Product datasheet for **TA384243**

Fibronectin (FN1) Rabbit Polyclonal Antibody

Product data:

Product Type:	Primary Antibodies
Applications:	ELISA, IHC, WB
Recommended Dilution:	WB: 1/500-1/2000 IHC: 1/100-1/300 ELISA: 1/20000
Reactivity:	Human, Mouse, Rat
Host:	Rabbit
Isotype:	IgG
Clonality:	Polyclonal
Immunogen:	The antiserum was produced against synthesized peptide derived from human Fibronectin 1. AA range:2337-2386
Formulation:	Liquid in PBS containing 50% glycerol, 0.5% BSA and 0.02% sodium azide, pH 7.3.
Concentration:	lot specific
Purification:	Affinity Chromatography
Conjugation:	Unconjugated
Storage:	Store at 4°C short term. Aliquot and store at -20°C long term. Avoid freeze/thaw cycles.
Stability:	1 year
Predicted Protein Size:	Observed MW (kDa):260
Gene Name:	fibronectin 1
Database Link:	Entrez Gene 2335 Human P02751



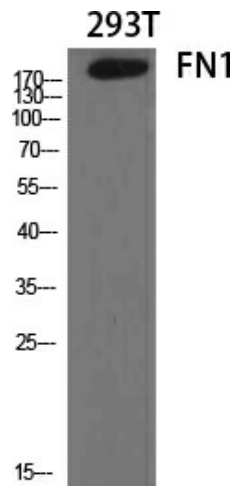
[View online »](#)

Background:

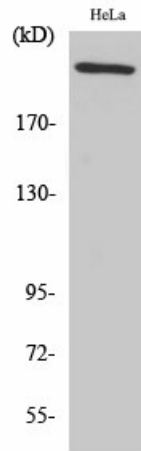
Swiss-Prot Acc.P02751.Fibronectins bind cell surfaces and various compounds including collagen, fibrin, heparin, DNA, and actin. Fibronectins are involved in cell adhesion, cell motility, opsonization, wound healing, and maintenance of cell shape. Involved in osteoblast compaction through the fibronectin fibrillogenesis cell-mediated matrix assembly process, essential for osteoblast mineralization. Participates in the regulation of type I collagen deposition by osteoblasts. Anastellin binds fibronectin and induces fibril formation. This fibronectin polymer, named superfibronectin, exhibits enhanced adhesive properties. Both anastellin and superfibronectin inhibit tumor growth, angiogenesis and metastasis. Anastellin activates p38 MAPK and inhibits lysophospholipid signaling.

Synonyms:

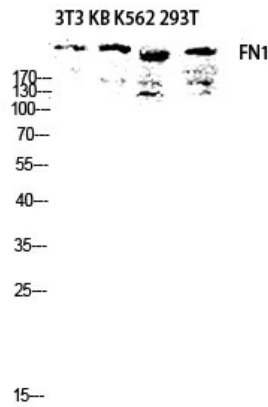
CIG; DKFZp686F10164; DKFZp686H0342; DKFZp686I1370; DKFZp686O13149; ED-B; FINC; FN; FNZ; GFND; GFND2; LETS; MSF; OTTHUMP00000206762; OTTHUMP00000206767

Product images:

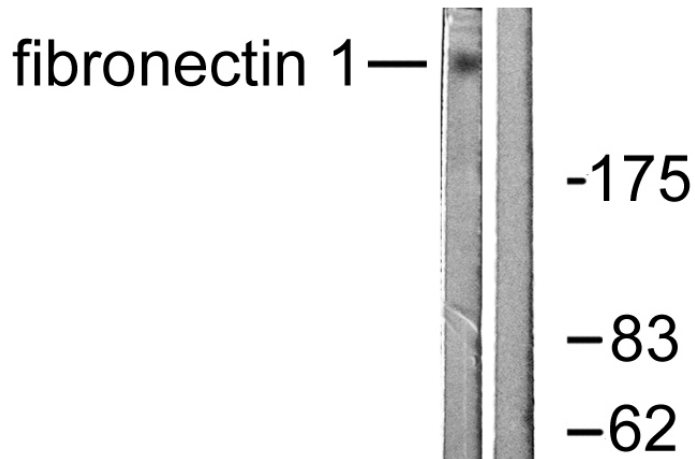
Western blot analysis of Fibronectin in various lysates using Fibronectin antibody.



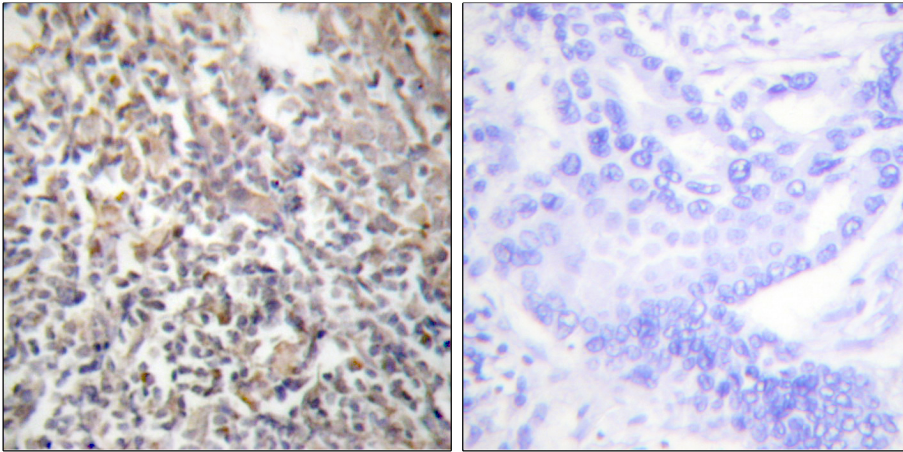
Western blot analysis of Fibronectin in HeLa lysates using FN1 antibody.



Western blot analysis of Fibronectin in 3T3 KB K562 293T lysates using FN1 antibody.



Western blot analysis of Fibronectins in HeLa lysates using Fibronectin 1 antibody. The lane on the right is blocked with the synthesized peptide.



Immunohistochemistry analysis of paraffin-embedded Human thyroid gland tissue using Fibronectin 1 antibody. High-pressure and temperature Sodium Citrate pH 6.0 was used for antigen retrieval. Sample with blocking peptide on the right.