

Product datasheet for **TA384239**

FLT3 Rabbit Polyclonal Antibody

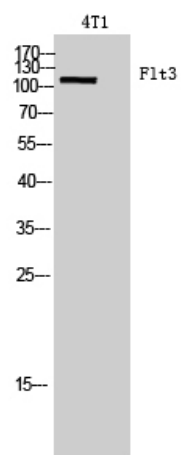
Product data:

| | |
|-------------------------|---|
| Product Type: | Primary Antibodies |
| Applications: | ELISA, WB |
| Recommended Dilution: | WB: 1/500-1/2000 ELISA: 1/10000 |
| Reactivity: | Human, Mouse, Rat |
| Host: | Rabbit |
| Isotype: | IgG |
| Clonality: | Polyclonal |
| Immunogen: | The antiserum was produced against synthesized peptide derived from the Internal region of human FLT3. AA range:451-500 |
| Formulation: | Liquid in PBS containing 50% glycerol, 0.5% BSA and 0.02% sodium azide, pH 7.3. |
| Concentration: | lot specific |
| Purification: | Affinity Purified |
| Conjugation: | Unconjugated |
| Storage: | Store at 4°C short term. Aliquot and store at -20°C long term. Avoid freeze/thaw cycles. |
| Stability: | 1 year |
| Predicted Protein Size: | Observed MW (kDa):110 |
| Gene Name: | fms related tyrosine kinase 3 |
| Database Link: | Entrez Gene 2322 Human P36888 |
| Background: | Swiss-Prot Acc.P36888. |
| Synonyms: | CD135; FLK2; STK-1; STK1 |



[View online »](#)

Product images:



Western blot analysis of CD135 in 4T1 lysates using CD135 antibody.