

Product datasheet for **TA384236**

Flotillin 1 (FLOT1) Rabbit Monoclonal Antibody [Clone ID: R08-5E9]

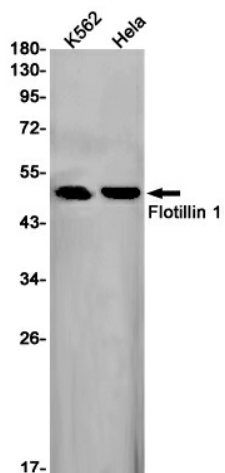
Product data:

Product Type:	Primary Antibodies
Clone Name:	R08-5E9
Applications:	IF, IP, WB
Recommended Dilution:	WB: 1/2000-1/10000 ICC/IF: 1/100 IP: 1/20-1/50
Reactivity:	Human
Host:	Rabbit
Isotype:	IgG
Clonality:	Monoclonal
Immunogen:	A synthetic peptide of human Flotillin 1
Formulation:	50mM Tris-Glycine(pH 7.4), 0.15M NaCl, 40% Glycerol, 0.01% Sodium azide and 0.05% BSA
Concentration:	lot specific
Purification:	Affinity Purified
Conjugation:	Unconjugated
Storage:	Store at 4°C short term. Aliquot and store at -20°C long term. Avoid freeze/thaw cycles.
Stability:	1 year
Predicted Protein Size:	Calculated MW: 47 kDa; Observed MW: 49 kDa
Gene Name:	flotillin 1
Database Link:	Entrez Gene 10211 Human O75955
Background:	Swiss-Prot Acc.O75955.May act as a scaffolding protein within caveolar membranes, functionally participating in formation of caveolae or caveolae-like vesicles.
Synonyms:	FLOT1

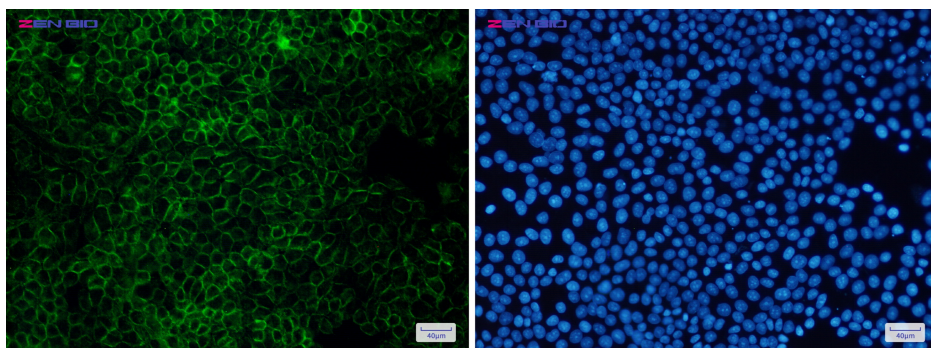


[View online »](#)

Product images:



Western blot analysis of Flotillin 1 in K562, HeLa lysates using Flotillin 1 antibody.



Immunocytochemistry of Flotillin 1 (green) in HeLa cells using Flotillin 1 Rabbit mAb at dilution 1/50, and DAPI (blue)