

Product datasheet for **TA384235**

Flotillin 1 (FLOT1) Rabbit Polyclonal Antibody

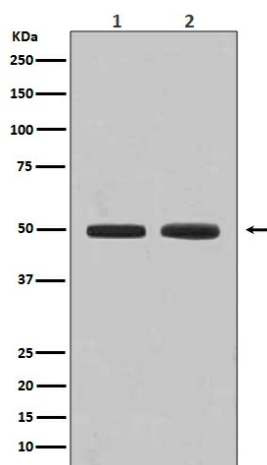
Product data:

Product Type:	Primary Antibodies
Applications:	IHC, IP, WB
Recommended Dilution:	WB: 1/500-1/2000 IHC: 1/50-1/200 IP: 1/50
Reactivity:	Human, Mouse, Rat
Host:	Rabbit
Isotype:	IgG
Clonality:	Polyclonal
Immunogen:	A synthesized peptide derived from human Flotillin 1
Formulation:	Rabbit IgG in phosphate buffered saline , pH 7.4, 150mM NaCl, 0.02% sodium azide and 50% glycerol.
Concentration:	lot specific
Purification:	Affinity Chromatography
Conjugation:	Unconjugated
Storage:	Store at 4°C short term. Aliquot and store at -20°C long term. Avoid freeze/thaw cycles.
Stability:	1 year
Predicted Protein Size:	48kDa
Gene Name:	flotillin 1
Database Link:	Entrez Gene 10211 Human O75955
Background:	Swiss-Prot Acc.O75955.May act as a scaffolding protein within caveolar membranes, functionally participating in formation of caveolae or caveolae-like vesicles.
Synonyms:	FLOT1

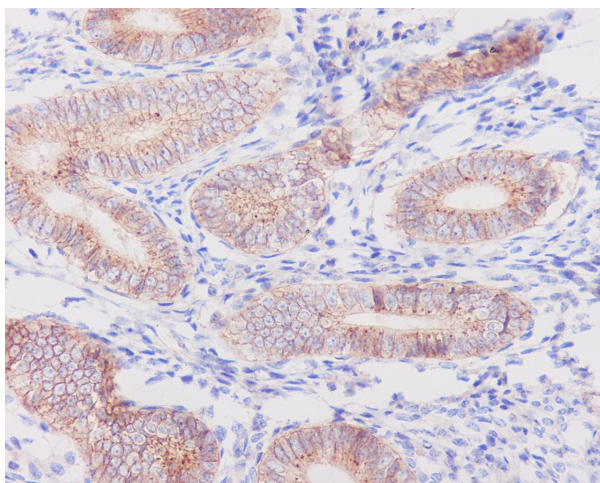


[View online »](#)

Product images:



Western blot analysis of Flotillin 1 in (1) HeLa lysates; (2) K562 lysates using Flotillin 1 antibody.



Immunohistochemistry analysis of paraffin-embedded Human uterus using Flotillin 1 antibody. High-pressure and temperature Sodium Citrate pH 6.0 was used for antigen retrieval.