

Product datasheet for **TA384233**

Filamin A (FLNA) Rabbit Polyclonal Antibody

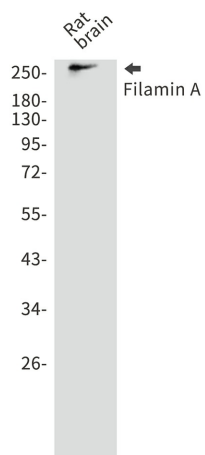
Product data:

Product Type:	Primary Antibodies
Applications:	FC, IF, IHC, WB
Recommended Dilution:	WB: 1/1000 IHC: 1/50 ICC/IF: 1/20 FC: 1/20
Reactivity:	Human, Mouse, Rat
Host:	Rabbit
Isotype:	IgG
Clonality:	Polyclonal
Immunogen:	A synthetic peptide of human Filamin A
Formulation:	50mM Tris-Glycine(pH 7.4), 0.15M NaCl, 40% Glycerol, 0.01% Sodium azide and 0.05% BSA
Concentration:	lot specific
Purification:	Affinity Purified
Conjugation:	Unconjugated
Storage:	Store at 4°C short term. Aliquot and store at -20°C long term. Avoid freeze/thaw cycles.
Stability:	1 year
Predicted Protein Size:	Calculated MW: 281 kDa; Observed MW: 281 kDa
Gene Name:	filamin A
Database Link:	Entrez Gene 2316 Human P21333
Background:	Swiss-Prot Acc.P21333.
Synonyms:	ABP-280; ABPX; Alpha-filamin; DKFZp434P031; Filamin-1; FLN; FLN1; FMD; MNS; NHBP; OPD; OPD1; OPD2

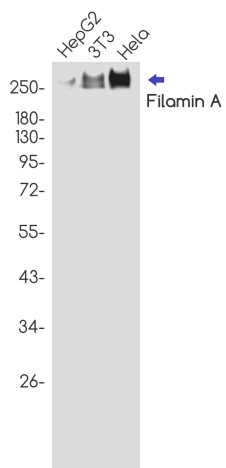


[View online »](#)

Product images:



Western blot analysis of Filamin A in rat brain lysates using Filamin A antibody.



Western blot analysis of Filamin A in HepG2, 3T3, HeLa lysates using Filamin A antibody.