

Product datasheet for **TA384232**

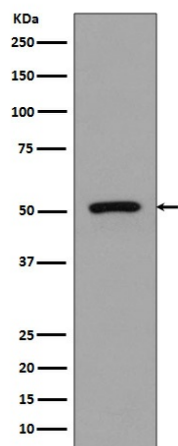
FLI1 Rabbit Polyclonal Antibody

Product data:

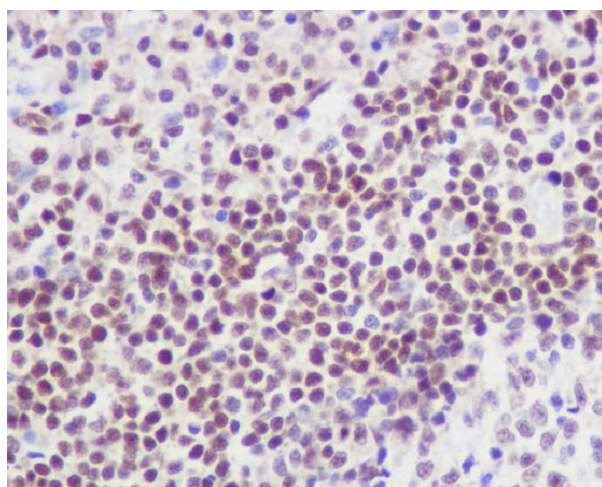
Product Type:	Primary Antibodies
Applications:	IHC, WB
Recommended Dilution:	WB: 1/500-1/2000 IHC: 1/100-1/500
Reactivity:	Human, Mouse
Host:	Rabbit
Isotype:	IgG
Clonality:	Polyclonal
Immunogen:	A synthesized peptide derived from human FLI1
Formulation:	Rabbit IgG in phosphate buffered saline , pH 7.4, 150mM NaCl, 0.02% sodium azide and 50% glycerol.
Concentration:	lot specific
Purification:	Affinity Chromatography
Conjugation:	Unconjugated
Storage:	Store at 4°C short term. Aliquot and store at -20°C long term. Avoid freeze/thaw cycles.
Stability:	1 year
Predicted Protein Size:	51kDa
Gene Name:	Fli-1 proto-oncogene, ETS transcription factor
Database Link:	Entrez Gene 2313 Human Q01543
Background:	Swiss-Prot Acc.Q01543.FLI1 Sequence-specific transcriptional activator. Recognizes the DNA sequence 5'-C[CA]GGAAGT-3'. Belongs to the ETS family. Can form homodimers or heterodimers with ETV6/TEL1. 2 isoforms of the human protein are produced by alternative splicing.
Synonyms:	EWSR2; SIC-1



[View online »](#)

Product images:

Western blot analysis of FLI1 expression in Jurkat cell lysate.



Immunohistochemical analysis of paraffin-embedded human tonsil, using FLI1 Antibody .