

Product datasheet for **TA384230**

FKBP51 (FKBP5) Rabbit Polyclonal Antibody

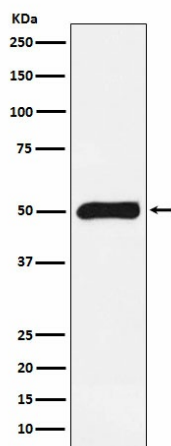
Product data:

| | |
|-------------------------|--|
| Product Type: | Primary Antibodies |
| Applications: | FC, IF, IHC, IP, WB |
| Recommended Dilution: | WB: 1/500-1/2000 IHC: 1/50-1/200 ICC/IF: 1/50-1/200 IP: 1/50 FC: 1/50 |
| Reactivity: | Human, Rat |
| Host: | Rabbit |
| Isotype: | IgG |
| Clonality: | Polyclonal |
| Immunogen: | A synthesized peptide derived from human FKBP51 |
| Formulation: | Rabbit IgG in phosphate buffered saline , pH 7.4, 150mM NaCl, 0.02% sodium azide and 50% glycerol. |
| Concentration: | lot specific |
| Purification: | Affinity Chromatography |
| Conjugation: | Unconjugated |
| Storage: | Store at 4°C short term. Aliquot and store at -20°C long term. Avoid freeze/thaw cycles. |
| Stability: | 1 year |
| Predicted Protein Size: | 51kDa |
| Gene Name: | FK506 binding protein 5 |
| Database Link: | Entrez Gene 2289 Human Q13451 |
| Background: | Interacts with functionally mature heterooligomeric progesterone receptor complexes along with HSP90 and TEBP. |
| Synonyms: | AIG6; FKBP-51; FKBP51; FKBP54; MGC111006; OTTHUMP00000016268; P54; PPIase; Ptg-10; rotamase |



[View online »](#)

Product images:



Western blot analysis of FKBP51 in Caco2 lysates using FKBP51 antibody.