

## Product datasheet for **TA384220**

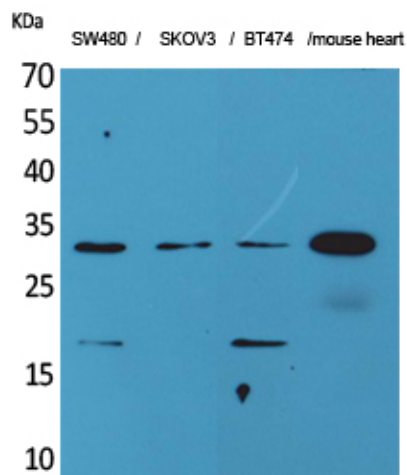
### FGF18 Rabbit Polyclonal Antibody

#### Product data:

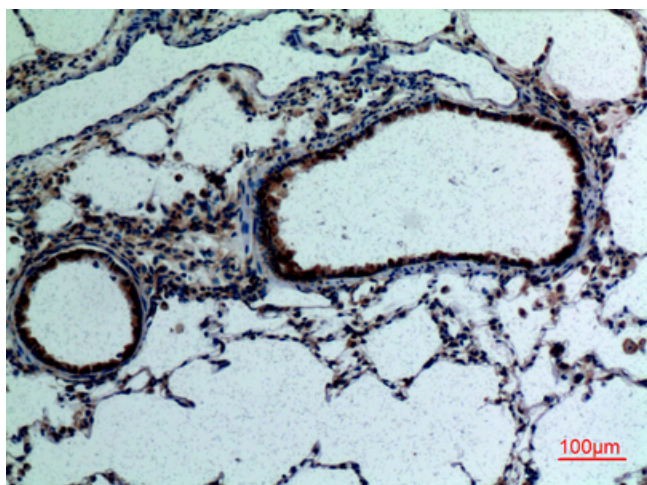
Product Type:	Primary Antibodies
Applications:	ELISA, IHC, WB
Recommended Dilution:	WB: 1/500-1/2000 IHC-p: 1/100-300 ELISA: 1/20000
Reactivity:	Human, Mouse, Rat
Host:	Rabbit
Isotype:	IgG
Clonality:	Polyclonal
Immunogen:	The antiserum was produced against synthesized peptide derived from the C-terminal region of human FGF18. AA range:158-207
Formulation:	Liquid in PBS containing 50% glycerol, 0.5% BSA and 0.02% sodium azide, pH 7.3.
Concentration:	lot specific
Purification:	Affinity Purified
Conjugation:	Unconjugated
Storage:	Store at 4°C short term. Aliquot and store at -20°C long term. Avoid freeze/thaw cycles.
Stability:	1 year
Predicted Protein Size:	Observed MW (kDa):28
Database Link:	<a href="#">O76093</a>
Background:	Swiss-Prot Acc.O76093.



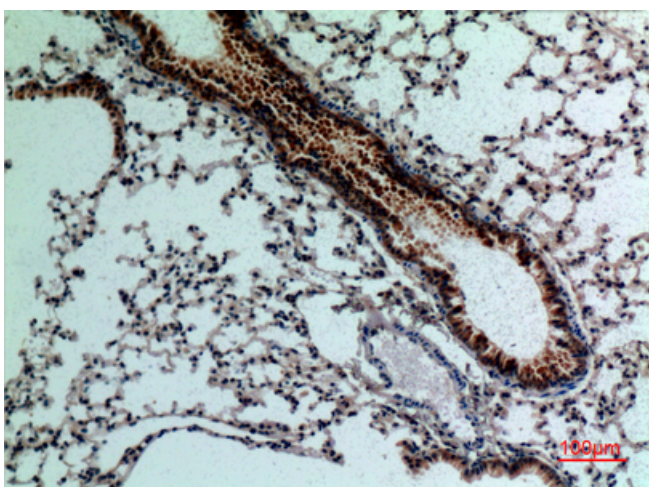
[View online »](#)

**Product images:**

Western blot analysis of FGF18 in SW480, SKOV-3, BT474, mouse heart lysates using FGF18 antibody.



Immunohistochemistry analysis of paraffin-embedded rat lung using FGF18 antibody. High-pressure and temperature Sodium Citrate pH 6.0 was used for antigen retrieval.



Immunohistochemistry analysis of paraffin-embedded mouse lung using FGF18 antibody. High-pressure and temperature Sodium Citrate pH 6.0 was used for antigen retrieval.