

## Product datasheet for **TA384216M**

### FES Rabbit Monoclonal Antibody [Clone ID: R02-2F6]

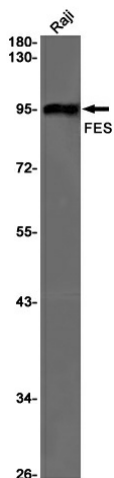
#### Product data:

Product Type:	Primary Antibodies
Clone Name:	R02-2F6
Applications:	WB
Recommended Dilution:	WB: 1/1000-1/5000
Reactivity:	Human
Host:	Rabbit
Isotype:	IgG
Clonality:	Monoclonal
Immunogen:	A synthetic peptide of human FES
Formulation:	50mM Tris-Glycine(pH 7.4), 0.15M NaCl, 40% Glycerol, 0.01% Sodium azide and 0.05% BSA
Concentration:	lot specific
Purification:	Affinity Purified
Conjugation:	Unconjugated
Storage:	Store at 4°C short term. Aliquot and store at -20°C long term. Avoid freeze/thaw cycles.
Stability:	1 year
Predicted Protein Size:	Calculated MW: 94 kDa; Observed MW: 94 kDa
Gene Name:	FES proto-oncogene, tyrosine kinase
Database Link:	<a href="#">Entrez Gene 2242 Human P07332</a>
Background:	Swiss-Prot Acc.P07332.Tyrosine-protein kinase that acts downstream of cell surface receptors and plays a role in the regulation of the actin cytoskeleton, microtubule assembly, cell attachment and cell spreading. Plays a role in FCER1 (high affinity immunoglobulin epsilon receptor)-mediated signaling in mast cells. Acts down-stream of the activated FCER1 receptor and the mast/stem cell growth factor receptor KIT. Plays a role in the regulation of mast cell degranulation. Plays a role in the regulation of cell differentiation and promotes neurite outgrowth in response to NGF signaling. Plays a role in cell scattering and cell migration in response to HGF-induced activation of EZR. Phosphorylates BCR and down-regulates BCR kinase activity. Phosphorylates HCLS1/HS1, PECAM1, STAT3 and TRIM28.


[View online »](#)

Synonyms: C-Fes; FPS

## Product images:



Western blot detection of FES in Raji cell lysates using FES Rabbit mAb(1:1000 diluted). Predicted band size: 94KDa. Observed band size: 94KDa.