

Product datasheet for **TA384215**

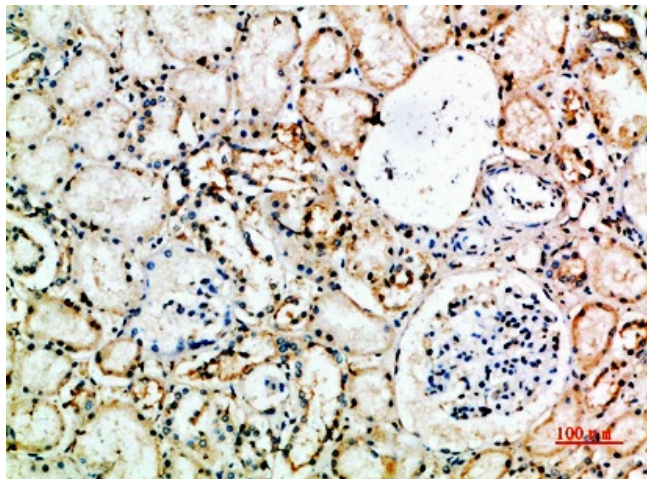
CD16 (FCGR3A) Rabbit Polyclonal Antibody

Product data:

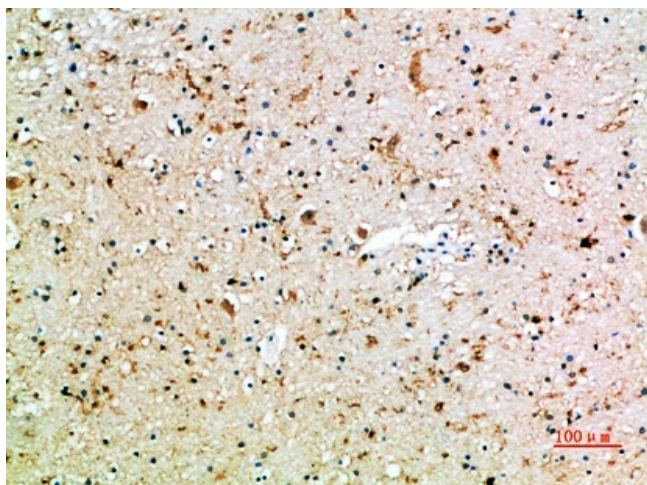
Product Type:	Primary Antibodies
Applications:	ELISA, IHC
Recommended Dilution:	IHC-p: 1/50-1/200
Reactivity:	Human
Host:	Rabbit
Isotype:	IgG
Clonality:	Polyclonal
Immunogen:	Synthetic peptide from human protein at AA range: 100-150
Formulation:	Liquid in PBS containing 50% glycerol, 0.5% BSA and 0.02% sodium azide, pH 7.3.
Concentration:	lot specific
Purification:	Affinity Purified
Conjugation:	Unconjugated
Storage:	Store at 4°C short term. Aliquot and store at -20°C long term. Avoid freeze/thaw cycles.
Stability:	1 year
Gene Name:	Fc fragment of IgG receptor IIIa
Database Link:	Entrez Gene 2214 Human P08637
Background:	Swiss-Prot Acc.P08637/O75015.
Synonyms:	CD16; CD16A; FCG3; FcgammaRIIIA; FCGR3; FCGRIII; FCR-10; FCRIII; FCRIIIA; IGFR3



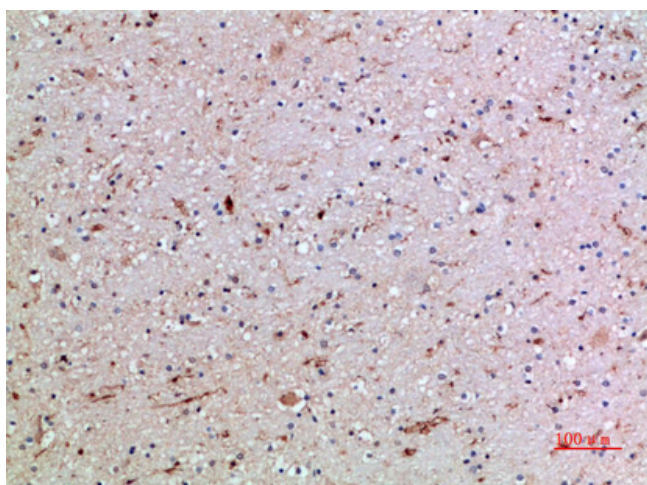
[View online »](#)

Product images:

Immunohistochemistry analysis of paraffin-embedded Human kidney using CD16 antibody. High-pressure and temperature Sodium Citrate pH 6.0 was used for antigen retrieval.



Immunohistochemical analysis of paraffin-embedded Human tonsils using CD16 antibody. High-pressure and temperature Sodium Citrate pH 6.0 was used for antigen retrieval.



Immunohistochemistry analysis of paraffin-embedded Human brain using CD16 antibody. High-pressure and temperature Sodium Citrate pH 6.0 was used for antigen retrieval.