

## Product datasheet for **TA384213**

### FBP1 Rabbit Monoclonal Antibody [Clone ID: R04-1D6]

#### Product data:

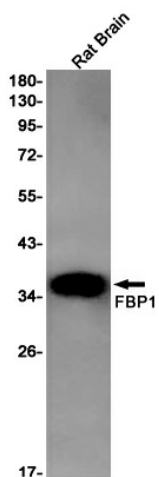
Product Type:	Primary Antibodies
Clone Name:	R04-1D6
Applications:	IHC, WB
Recommended Dilution:	WB: 1/1000-1/5000 IHC: 1/20-1/50
Reactivity:	Human, Rat
Host:	Rabbit
Isotype:	IgG
Clonality:	Monoclonal
Immunogen:	A synthetic peptide of human FBP1
Formulation:	50mM Tris-Glycine(pH 7.4), 0.15M NaCl, 40% Glycerol, 0.01% Sodium azide and 0.05% BSA
Concentration:	lot specific
Purification:	Affinity Purified
Conjugation:	Unconjugated
Storage:	Store at 4°C short term. Aliquot and store at -20°C long term. Avoid freeze/thaw cycles.
Stability:	1 year
Predicted Protein Size:	Calculated MW: 37 kDa; Observed MW: 37 kDa
Gene Name:	fructose-bisphosphatase 1
Database Link:	<a href="#">Entrez Gene 2203 Human P09467</a>
Background:	Swiss-Prot Acc.P09467.Catalyzes the hydrolysis of fructose 1,6-bisphosphate to fructose 6-phosphate in the presence of divalent cations, acting as a rate-limiting enzyme in gluconeogenesis. Plays a role in regulating glucose sensing and insulin secretion of pancreatic beta-cells. Appears to modulate glycerol gluconeogenesis in liver. Important regulator of appetite and adiposity; increased expression of the protein in liver after nutrient excess increases circulating satiety hormones and reduces appetite-stimulating neuropeptides and thus seems to provide a feedback mechanism to limit weight gain.



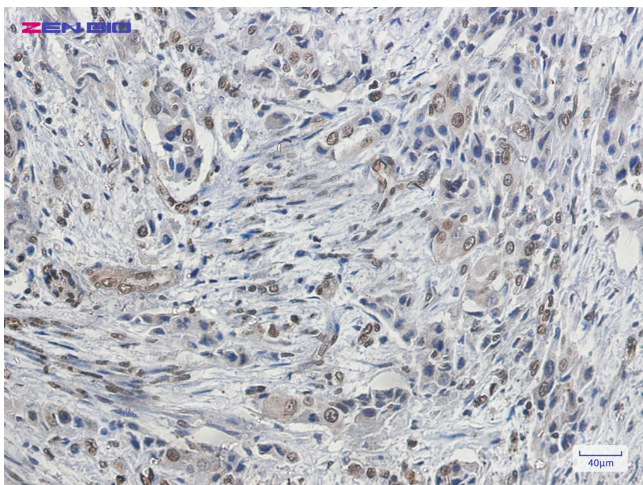
[View online »](#)

Synonyms: FBP

### Product images:



Western blot analysis of FBP1 in rat Brain lysates using FBP1 antibody.



Immunohistochemistry of FBP1 in paraffin-embedded Human lung cancer tissue using FBP1 Rabbit mAb at dilution 1/20