

## Product datasheet for TA384212S

### Fibrillarin (FBL) Rabbit Monoclonal Antibody [Clone ID: R09-7E5]

#### Product data:

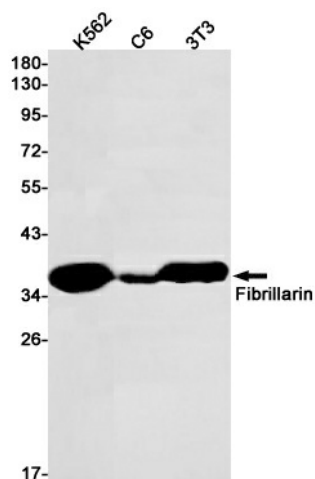
Product Type:	Primary Antibodies
Clone Name:	R09-7E5
Applications:	IP, WB
Recommended Dilution:	WB: 1/1000
Reactivity:	Human, Mouse, Rat
Host:	Rabbit
Isotype:	IgG
Clonality:	Monoclonal
Immunogen:	A synthetic peptide of human Fibrillarin
Formulation:	50mM Tris-Glycine(pH 7.4), 0.15M NaCl, 40% Glycerol, 0.01% Sodium azide and 0.05% BSA
Concentration:	lot specific
Purification:	Affinity Purified
Conjugation:	Unconjugated
Storage:	Store at 4°C short term. Aliquot and store at -20°C long term. Avoid freeze/thaw cycles.
Stability:	1 year
Predicted Protein Size:	Calculated MW: 34 kDa; Observed MW: 34 kDa
Gene Name:	fibrillarin
Database Link:	<a href="#">Entrez Gene 2091 Human P22087</a>
Background:	Swiss-Prot Acc.P22087.S-adenosyl-L-methionine-dependent methyltransferase that has the ability to methylate both RNAs and proteins. Involved in pre-rRNA processing by catalyzing the site-specific 2'-hydroxyl methylation of ribose moieties in pre-ribosomal RNA. Site specificity is provided by a guide RNA that base pairs with the substrate. Methylation occurs at a characteristic distance from the sequence involved in base pairing with the guide RNA. Also acts as a protein methyltransferase by mediating methylation of 'Gln-105' of histone H2A (H2AQ104me), a modification that impairs binding of the FACT complex and is specifically present at 35S ribosomal DNA locus (PubMed:24352239).



[View online »](#)

Synonyms: FIB; FIB1; fibrillarlin; FLRN; RNU3IP1

### Product images:



Western blot detection of Fibrillarlin in K562,C6,3T3 cell lysates using Fibrillarlin Rabbit mAb(1:1000 diluted).Predicted band size:34kDa.Observed band size:34kDa.