

Product datasheet for **TA384209**

Fas Ligand (FASLG) Rabbit Polyclonal Antibody

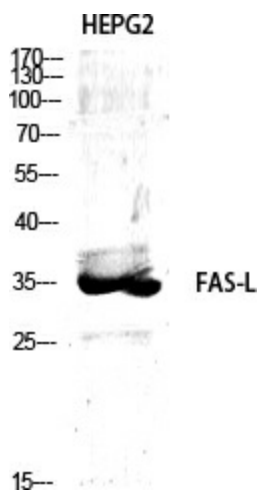
Product data:

Product Type:	Primary Antibodies
Applications:	ELISA, IF, IHC, WB
Recommended Dilution:	WB: 1/500-1/2000 IHC: 1/100-1/300 IF: 1/200-1/1000 ELISA: 1/40000
Reactivity:	Human, Mouse
Host:	Rabbit
Isotype:	IgG
Clonality:	Polyclonal
Immunogen:	The antiserum was produced against synthesized peptide derived from human FAS ligand. AA range:101-150
Formulation:	Liquid in PBS containing 50% glycerol, 0.5% BSA and 0.02% sodium azide, pH 7.3.
Concentration:	lot specific
Purification:	Affinity Purified
Conjugation:	Unconjugated
Storage:	Store at 4°C short term. Aliquot and store at -20°C long term. Avoid freeze/thaw cycles.
Stability:	1 year
Predicted Protein Size:	Observed MW (kDa):33
Gene Name:	Fas ligand
Database Link:	Entrez Gene 356 Human P48023
Background:	Swiss-Prot Acc.P48023.
Synonyms:	APT1LG1; APTL; CD95L; CD178; FASL; TNFSF6



[View online »](#)

Product images:



Western blot analysis of Fas Ligand in various lysates using Fas Ligand antibody.