

## Product datasheet for **TA384202**

### Factor VIII (F8) Rabbit Polyclonal Antibody

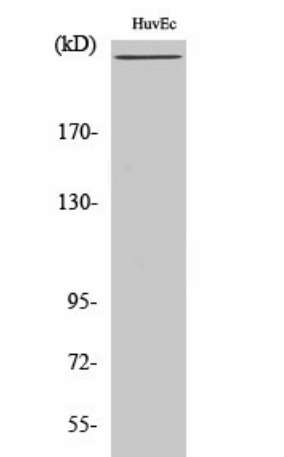
#### Product data:

Product Type:	Primary Antibodies
Applications:	ELISA, IHC, WB
Recommended Dilution:	WB: 1/1000 IHC: 1/50 ELISA: 1/10000
Reactivity:	Human, Mouse
Host:	Rabbit
Isotype:	IgG
Clonality:	Polyclonal
Immunogen:	Synthesized peptide derived from the C-terminal region of human Factor VIII. at AA range: 2130-2210
Formulation:	Liquid in PBS containing 50% glycerol, 0.5% BSA and 0.02% sodium azide, pH 7.3.
Concentration:	lot specific
Purification:	Affinity Purified
Conjugation:	Unconjugated
Storage:	Store at 4°C short term. Aliquot and store at -20°C long term. Avoid freeze/thaw cycles.
Stability:	1 year
Predicted Protein Size:	300 kDa
Gene Name:	coagulation factor VIII
Database Link:	<a href="#">Entrez Gene 2157 Human P00451</a>
Synonyms:	AHF; DXS1253E; F8B; F8C; FVIII; HEMA

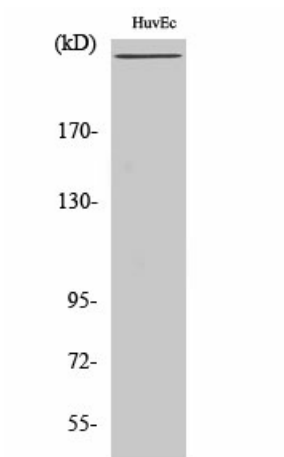


[View online »](#)

Product images:



Western blot analysis of Factor VIII in HuvEc lysates using Factor VIII antibody.



Western blot analysis of Factor VIII in HuvEc lysates using Factor VIII antibody.