

Product datasheet for **TA384198**

Junctional Adhesion Molecule 1 (F11R) Rabbit Polyclonal Antibody

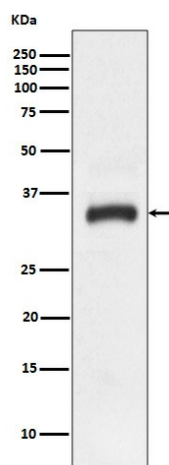
Product data:

Product Type:	Primary Antibodies
Applications:	IHC, WB
Recommended Dilution:	WB: 1/500-1/2000 IHC: 1/50-1/200
Reactivity:	Human, Mouse, Rat
Host:	Rabbit
Isotype:	IgG
Clonality:	Polyclonal
Immunogen:	A synthesized peptide derived from human JAM1
Formulation:	Rabbit IgG in phosphate buffered saline , pH 7.4, 150mM NaCl, 0.02% sodium azide and 50% glycerol.
Concentration:	lot specific
Purification:	Affinity Chromatography
Conjugation:	Unconjugated
Storage:	Store at 4°C short term. Aliquot and store at -20°C long term. Avoid freeze/thaw cycles.
Stability:	1 year
Predicted Protein Size:	33kDa
Gene Name:	F11 receptor
Database Link:	Entrez Gene 50848 Human Q9Y624
Background:	Swiss-Prot Acc.Q9Y624.Seems to plays a role in epithelial tight junction formation. Appears early in primordial forms of cell junctions and recruits PARD3. The association of the PARD6-PARD3 complex may prevent the interaction of PARD3 with JAM1, thereby preventing tight junction assembly (By similarity). Plays a role in regulating monocyte transmigration involved in integrity of epithelial barrier. Involved in platelet activation. In case of orthoreovirus infection, serves as receptor for the virus.
Synonyms:	CD321; JAM; JAM-1; JAM-A; JAM1; JAMA; JCAM; KAT; OTTHUMP00000027880; OTTHUMP00000027881; PAM-1

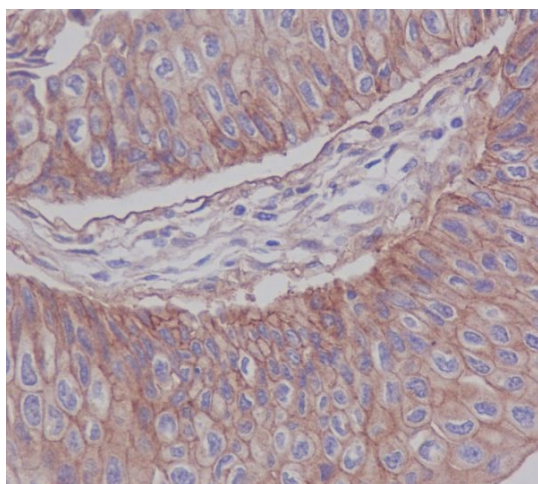


[View online »](#)

Product images:



Western blot analysis of JAM1 expression in HeLa cell lysate.



Immunohistochemical analysis of paraffin-embedded human bladder cancer, using JAM1 Antibody.