

Product datasheet for **TA384197M**

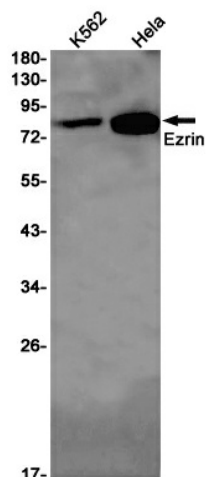
Ezrin (EZR) Rabbit Monoclonal Antibody [Clone ID: R08-3A4]

Product data:

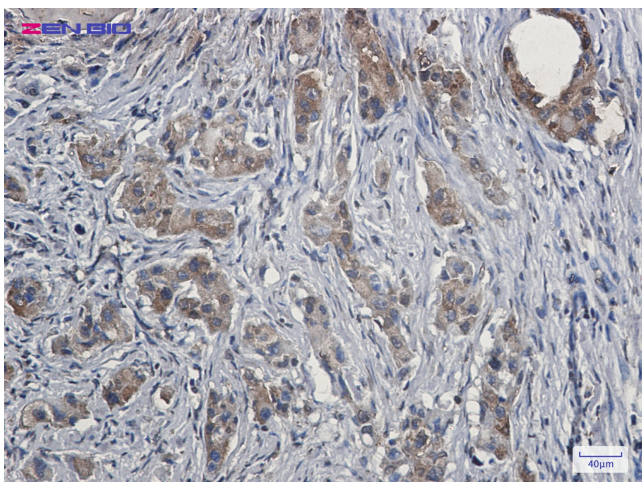
Product Type:	Primary Antibodies
Clone Name:	R08-3A4
Applications:	IHC, IP, WB
Recommended Dilution:	WB: 1/1000-1/5000 IHC: 1/20-1/1000 IP: 1/20
Reactivity:	Human
Host:	Rabbit
Isotype:	IgG
Clonality:	Monoclonal
Immunogen:	A synthetic peptide of human Ezrin
Formulation:	50mM Tris-Glycine(pH 7.4), 0.15M NaCl, 40% Glycerol, 0.01% Sodium azide and 0.05% BSA
Concentration:	lot specific
Purification:	Affinity Purified
Conjugation:	Unconjugated
Storage:	Store at 4°C short term. Aliquot and store at -20°C long term. Avoid freeze/thaw cycles.
Stability:	1 year
Predicted Protein Size:	Calculated MW: 69 kDa; Observed MW: 80 kDa
Gene Name:	ezrin
Database Link:	Entrez Gene 7430 Human P15311
Background:	Swiss-Prot Acc.P15311.Probably involved in connections of major cytoskeletal structures to the plasma membrane. In epithelial cells, required for the formation of microvilli and membrane ruffles on the apical pole. Along with PLEKHG6, required for normal macropinocytosis.
Synonyms:	CVIL; CVL; Cytovillin; DKFZp762H157; ezrin; FLJ26216; MGC1584; p81; VIL2; Villin-2

[View online »](#)

Product images:



Western blot detection of Ezrin in K562, HeLa cell lysates using Ezrin Rabbit mAb (1:1000 diluted). Predicted band size: 69 kDa. Observed band size: 80 kDa.



Immunohistochemistry of Ezrin in paraffin-embedded human lung cancer tissue using Ezrin Rabbit mAb at dilution 1/20.