

## Product datasheet for **TA384193S**

### **EWSR1 Rabbit Monoclonal Antibody [Clone ID: R09-3A7]**

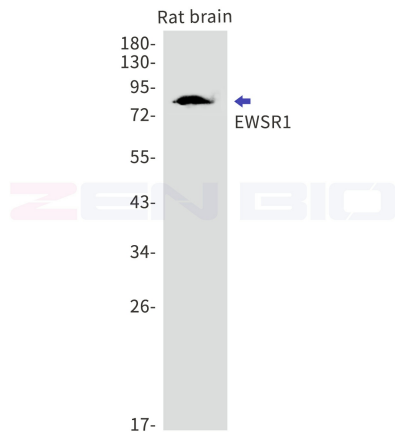
#### **Product data:**

<b>Product Type:</b>	Primary Antibodies
<b>Clone Name:</b>	R09-3A7
<b>Applications:</b>	IF, WB
<b>Recommended Dilution:</b>	WB: 1/2000-1/10000 ICC/IF: 1/50-1/200
<b>Reactivity:</b>	Human, Mouse, Rat
<b>Host:</b>	Rabbit
<b>Isotype:</b>	IgG
<b>Clonality:</b>	Monoclonal
<b>Immunogen:</b>	A synthetic peptide of human EWSR1
<b>Formulation:</b>	50mM Tris-Glycine(pH 7.4), 0.15M NaCl, 40% Glycerol, 0.01% Sodium azide and 0.05% BSA
<b>Concentration:</b>	lot specific
<b>Purification:</b>	Affinity Purified
<b>Conjugation:</b>	Unconjugated
<b>Storage:</b>	Store at 4°C short term. Aliquot and store at -20°C long term. Avoid freeze/thaw cycles.
<b>Stability:</b>	1 year
<b>Predicted Protein Size:</b>	Calculated MW: 69 kDa; Observed MW: 85 kDa
<b>Gene Name:</b>	EWS RNA binding protein 1
<b>Database Link:</b>	<a href="#">Entrez Gene 2130 Human Q01844</a>
<b>Background:</b>	Swiss-Prot Acc.Q01844.Might normally function as a transcriptional repressor. EWS-fusion-proteins (EFPS) may play a role in the tumorigenic process. They may disturb gene expression by mimicking, or interfering with the normal function of CTD-POLII within the transcription initiation complex. They may also contribute to an aberrant activation of the fusion protein target genes. SitesFeature keyPosition(s)Description
<b>Synonyms:</b>	bK984G1.4; EWS

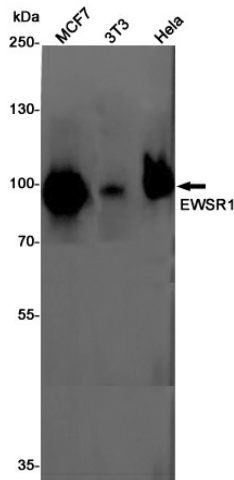


[View online »](#)

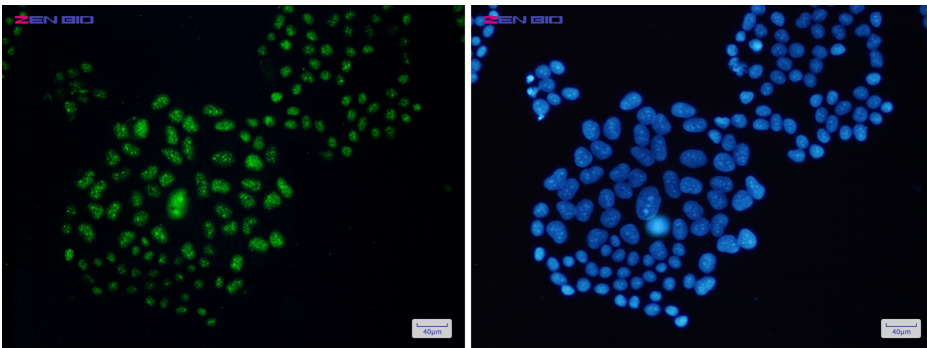
Product images:



Western blot detection of EWSR1 in Rat brain lysates using EWSR1 antibody. Predicted band size: 69kDa. Observed band size: 85kDa.



Western blot detection of EWSR1 in MCF7, 3T3, HeLa cell lysates using EWSR1 Rabbit mAb (1:1000 diluted). Predicted band size: 69kDa. Observed band size: 85kDa.



Immunocytochemistry of EWSR1 (green) in HeLa cells using EWSR1 Rabbit mAb at dilution 1/50, and DAPI (blue)