

## Product datasheet for **TA384193**

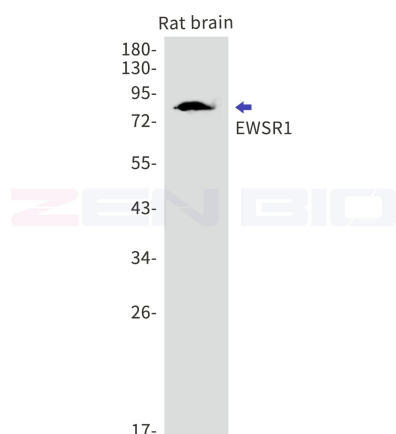
### **EWSR1 Rabbit Monoclonal Antibody [Clone ID: R09-3A7]**

#### **Product data:**

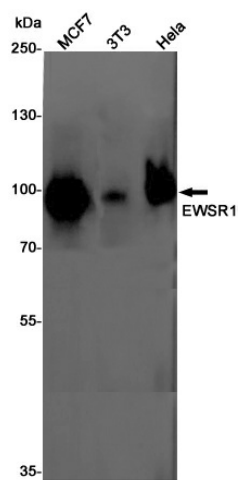
Product Type:	Primary Antibodies
Clone Name:	R09-3A7
Applications:	IF, WB
Recommended Dilution:	WB: 1/2000-1/10000 ICC/IF: 1/50-1/200
Reactivity:	Human, Mouse, Rat
Host:	Rabbit
Isotype:	IgG
Clonality:	Monoclonal
Immunogen:	A synthetic peptide of human EWSR1
Formulation:	50mM Tris-Glycine(pH 7.4), 0.15M NaCl, 40% Glycerol, 0.01% Sodium azide and 0.05% BSA
Concentration:	lot specific
Purification:	Affinity Purified
Conjugation:	Unconjugated
Storage:	Store at 4°C short term. Aliquot and store at -20°C long term. Avoid freeze/thaw cycles.
Stability:	1 year
Predicted Protein Size:	Calculated MW: 69 kDa; Observed MW: 85 kDa
Gene Name:	EWS RNA binding protein 1
Database Link:	<a href="#">Entrez Gene 2130 Human Q01844</a>
Background:	Swiss-Prot Acc.Q01844.Might normally function as a transcriptional repressor. EWS-fusion-proteins (EFPS) may play a role in the tumorigenic process. They may disturb gene expression by mimicking, or interfering with the normal function of CTD-POLII within the transcription initiation complex. They may also contribute to an aberrant activation of the fusion protein target genes.SitesFeature keyPosition(s)Description
Synonyms:	bK984G1.4; EWS



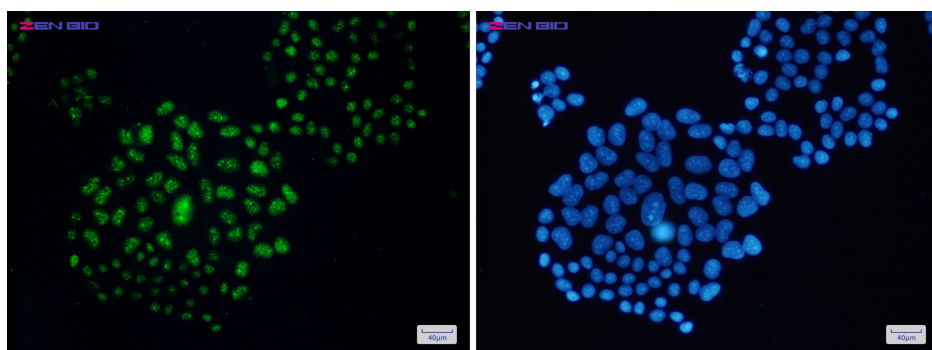
[View online »](#)

**Product images:**


Western blot detection of EWSR1 in Rat brain lysates using EWSR1 antibody. Predicted band size: 69kDa. Observed band size: 85kDa.



Western blot detection of EWSR1 in MCF7, 3T3, HeLa cell lysates using EWSR1 Rabbit mAb (1:1000 diluted). Predicted band size: 69kDa. Observed band size: 85kDa.



Immunocytochemistry of EWSR1 (green) in HeLa cells using EWSR1 Rabbit mAb at dilution 1/50, and DAPI (blue)