

## Product datasheet for **TA384192M**

### ETAA1 Rabbit Monoclonal Antibody [Clone ID: R03-8J1]

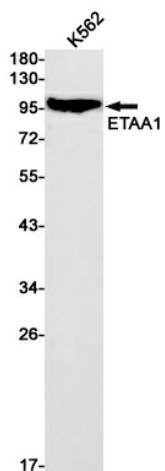
#### Product data:

Product Type:	Primary Antibodies
Clone Name:	R03-8J1
Applications:	WB
Recommended Dilution:	WB: 1/1000
Reactivity:	Human
Host:	Rabbit
Isotype:	IgG
Clonality:	Monoclonal
Immunogen:	Recombinant protein of human ETAA1
Formulation:	50mM Tris-Glycine(pH 7.4), 0.15M NaCl, 40% Glycerol, 0.01% Sodium azide and 0.05% BSA
Concentration:	lot specific
Purification:	Affinity Purified
Conjugation:	Unconjugated
Storage:	Store at 4°C short term. Aliquot and store at -20°C long term. Avoid freeze/thaw cycles.
Stability:	1 year
Predicted Protein Size:	Calculated MW: 103 kDa; Observed MW: 103 kDa
Gene Name:	Ewing tumor associated antigen 1
Database Link:	<a href="#">Entrez Gene 54465 Human Q9NY74</a>
Background:	Swiss-Prot Acc.Q9NY74.Replication stress response protein that accumulates at DNA damage sites and promotes replication fork progression and integrity (PubMed:27601467, PubMed:27723720, PubMed:27723717). Recruited to stalled replication forks via interaction with the RPA complex and directly stimulates ATR kinase activity independently of TOPBP1 (PubMed:27723720, PubMed:27723717). Probably only regulates a subset of ATR targets (PubMed:27723720, PubMed:27723717).
Synonyms:	ETAA16; FLJ22647



[View online »](#)

## Product images:



Western blot detection of ETAA1 in K562 cell lysates using ETAA1 Rabbit mAb(1:1000 diluted). Predicted band size:103kDa.Observed band size:103kDa.