

Product datasheet for **TA384191M**

Estrogen Receptor beta (ESR2) Rabbit Polyclonal Antibody

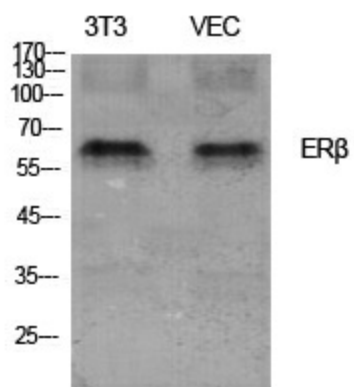
Product data:

Product Type:	Primary Antibodies
Applications:	ELISA, IF, IHC, WB
Recommended Dilution:	WB: 1/500-2000 ICC/IF: 1/50-300 IHC: 1/50-300
Reactivity:	Human, Mouse, Rat
Host:	Rabbit
Isotype:	IgG
Clonality:	Polyclonal
Immunogen:	The antiserum was produced against synthesized peptide derived from human Estrogen Receptor-beta. AA range:71-120
Formulation:	Liquid in PBS containing 50% glycerol, 0.5% BSA and 0.02% sodium azide, pH 7.3.
Concentration:	lot specific
Purification:	Affinity Purified
Conjugation:	Unconjugated
Storage:	Store at 4°C short term. Aliquot and store at -20°C long term. Avoid freeze/thaw cycles.
Stability:	1 year
Predicted Protein Size:	Observed MW (kDa):59
Gene Name:	estrogen receptor 2
Database Link:	Entrez Gene 2100 Human Q92731
Background:	Swiss-Prot Acc.Q92731.
Synonyms:	ER-BETA; Erb; ESR-BETA; ESRB; ESTRB; NR3A2

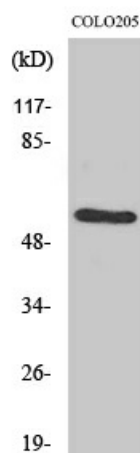


[View online »](#)

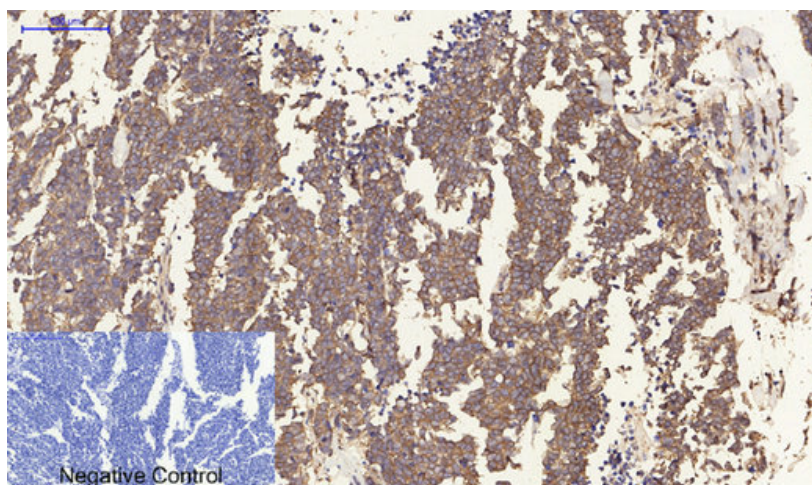
Product images:



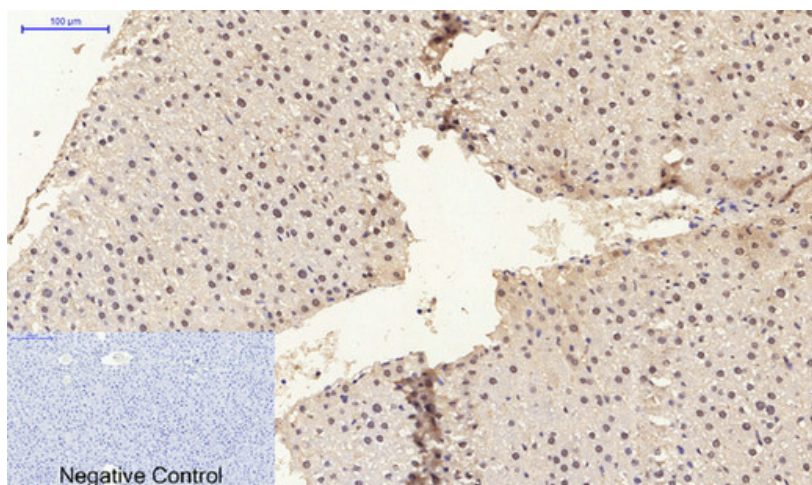
Western blot analysis of ER beta in 3T3, VEC lysates using ERβ antibody.



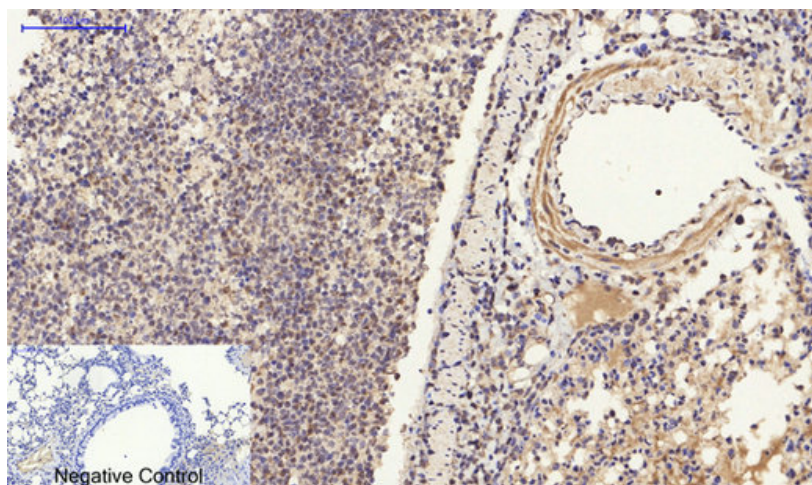
Western blot analysis of ER beta in COLO205 lysates using ERβ antibody



Immunohistochemical analysis of paraffin-embedded Human tonsils using ER beta antibody. High-pressure and temperature Sodium Citrate pH 6.0 was used for antigen retrieval. Negative control was used by secondary antibody only.



Immunohistochemistry analysis of paraffin-embedded rat liver tissue using ERβ antibody. High-pressure and temperature Sodium Citrate pH 6.0 was used for antigen retrieval. Negative control was used by secondary antibody only.



Immunohistochemistry analysis of paraffin-embedded mouse lung tissue using ERβ antibody. High-pressure and temperature Sodium Citrate pH 6.0 was used for antigen retrieval. Negative control was used by secondary antibody only.

